

Special Applications



The Caldwell Group • 800-628-4263 • www.caldwellinc.com

Rig-Master® Section
2011-2013 Master Catalog

Model WBH - Weld On Bucket Hook



PRODUCT FEATURES:

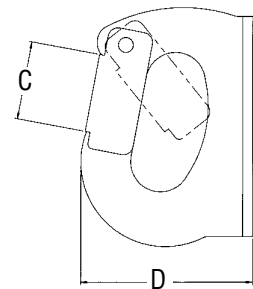
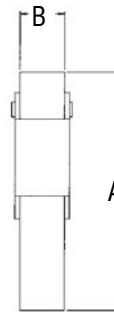
- Latch prevents accidental unhooking of load.
- Latch is resistant to dirt, concrete, and ice.
- Stainless steel latch spring.
- Hook can be welded on without preheating.



SPECIFICATIONS

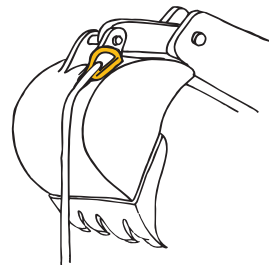
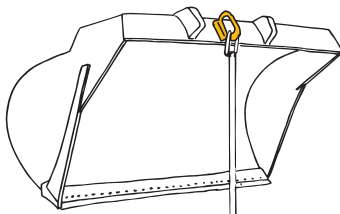
Model Number	Rated Capacity (lbs.)	Dimensions (in.)				Weight (lbs.)
		A	B	C	D	
BH-U1	2200	4-1/8	1	7/8	3	2
BH-U2	4400	4-7/8	1-1/4	1-1/8	3-3/8	3
BH-U3	6600	5-3/4	1-3/8	1-1/4	4	5
BH-U4	8800	6	1-3/8	1-1/4	4-1/4	5
BH-U6	13200	8-1/8	1-5/8	1-3/4	5	9
BH-U8	17600	8-1/2	2	1-3/4	5-1/2	12

NOTE: Not rated for below the hook lifting.



Applications

For use with any excavating equipment with bucket.



Welding Instructions

- Before welding, surface must be thoroughly cleaned and prepared.
- Electrode is AWS/ASTM E7018-1, ISO E51 5 B120 20H.
- The base plate must be welded evenly all around (no gaps).
- Base plate is mild steel.
- Welding is to be done by a qualified welder.
- Instructions given by electrode manufacturer must be followed.