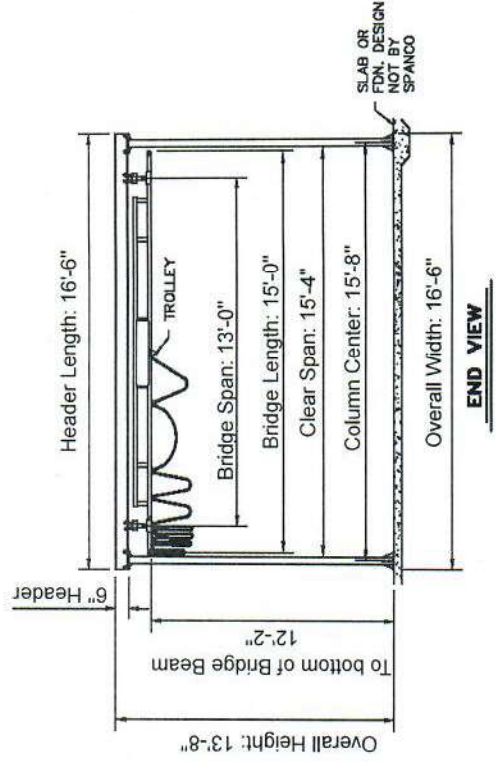
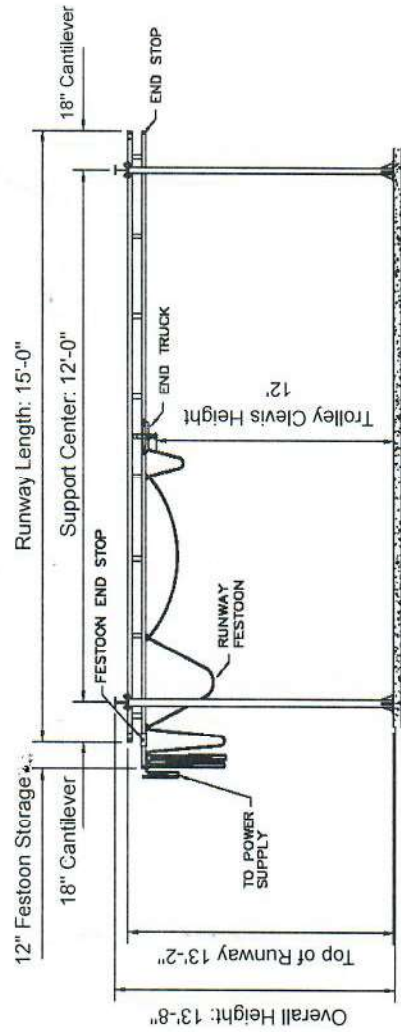


Ø 13/16"

TO ACCEPT A 3/4" DIAMETER BOLT
(LENGTH DETERMINED BY CUSTOMER)



- NOTES:
- BRACING TO BUILDING STEEL FOR LATERAL & LONGITUDINAL RIGIDITY REQUIRED IF ANY DISPLACEMENT IS PERCEIVED AS NOT DESIRED (BY OTHERS). SPANCO RECOMMENDS CONSULTING A PROFESSIONAL ENGINEER IN YOUR AREA TO SATISFY ALL LOCAL CODES & ORDINANCES.
 - HOIST SUPPLIED BY OTHERS.