

SLTX™

HEAVY DUTY WIRELESS RADIO REMOTE CONTROL

ENHANCE YOUR PRODUCTIVITY IN THE HARSHEST ENVIRONMENTS.

Enhance your productivity with the Telemotive SLTX wireless remote control. This lightweight control has batteries with a long life cycle, surface mount technology, and synthesized modules to enhance flexibility in the field. This heavy-duty transmitter is ideal for even the most abusive environment. SLTX was designed to withstand harsh environments such as steel mills and heavy manufacturing plants. It's backward compatible as a custom engineered or pre-engineered system.

ONE OF THE MOST DURABLE TRANSMITTERS AVAILABLE

- Proven heavy-duty lever switch style available with or without detents
- Military grade auxiliary function switches
- Rugged aluminum construction
- Super tough nylon end cap
- Stronger handle design

ENHANCED BATTERY END CAP DESIGN

- Makes battery easier to service, charge, and replace
- Charge the battery without taking the transmitter out of service
- No need to open the transmitter and expose electronics
- Superior battery contacts
- Battery design makes the SLTX lighter weight than the previous lead acid battery system
- Environmentally friendly battery with a long life cycle
 - SLTX transmitters include a NiMH battery
 - SLTX systems come with 2 NiMH batteries and one charger

SURFACE MOUNT TECHNOLOGY

- SLTX circuit boards feature SMT rather than conventional through-hole technology
- Higher quality, smaller, more durable circuit boards mean enhanced reliability



TELEMOTIVE

MAGNETEK RADIO REMOTE CONTROLS ARE MADE IN THE USA

ADVANCED FEATURES IMPROVE PERFORMANCE AND PRODUCTIVITY

- Ideal for harsh environments
- Synthesized RF technology available for:
 - Unlicensed (FCC Part 15) UHF - 31 selectable frequencies, easily changed without complicated programming devices
 - Licensed (FCC Part 90) VHF - programmed for your application
- Designed to minimize power consumption, providing one of the longest life batteries in the industry today:
 - Rechargeable NiMH Battery Pack
 - Disposable Alkaline Battery Pack

Perfect for Use in a Multitude of Applications

- Synthesized RF technology available:
 - Unlicensed (FCC Part 15/RSS-210)
 - Licensed (FCC Part 90/RSS-119)
- Backward compatible with most Telemotive Systems
- Up to 4 selectable licensed frequencies
- Custom engraving on engineered transmitters

AVAILABLE AS A PRE-ENGINEERED OR CUSTOMIZED ENGINEERED SYSTEM

PRE-ENGINEERED SYSTEMS

Our standard Pre-engineered SLTX system has flexibility not found in most off-the-shelf systems. Available with our *inteSmart* receiver.

inteSmart Receiver Features

- Custom output mapping via the Radio Control Programmer (RCP) and USB/IR Adapter
- Available in 12 to 24 outputs
- Synthesized RF— up to 31 operating channels
- Designed for VFD, PLC and contactor controls
- Compact design minimizes space requirements
- NEMA 4X Enclosure
- Optional pigtailed plug right in, minimizing field wiring
- Group coding—allows a receiver to recognize up to 8 transmitters on a first-come-first-serve basis



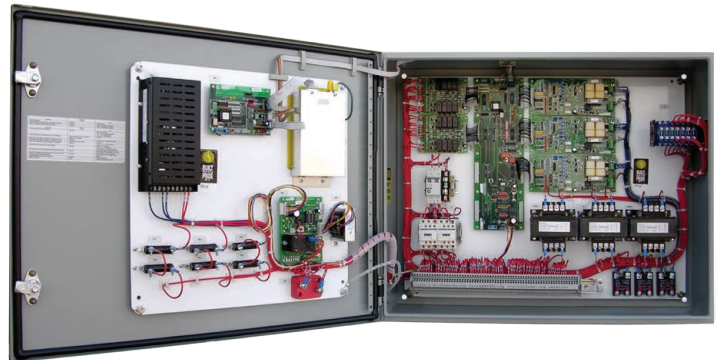
For more information, contact Magnetek Material Handling at 800.288.8178 or your local Magnetek Sales Representative.

CUSTOMIZED ENGINEERED SYSTEMS

We'll build your system to your specifications—with our 18K receiver, it's completely customizable.

18K Receiver Features

- Custom engineering as the application requires
- Modular construction for ease of onfiguration and maintenance
- Up to 64 programmable outputs
- Pitch & Catch or Multibox operation options
- Stepless interfaces available
- Contact monitoring capability
- NEMA 4 standard, NEMA 4X Enclosure available
- Regulatory options:
 - Licensed: FCC Part 90, IC Part C
 - Non-licensed: FCC Part 15, IC Part K
- Up to 16 selectable licensed frequencies
- Available in AC or DC



TELEMOTIVE