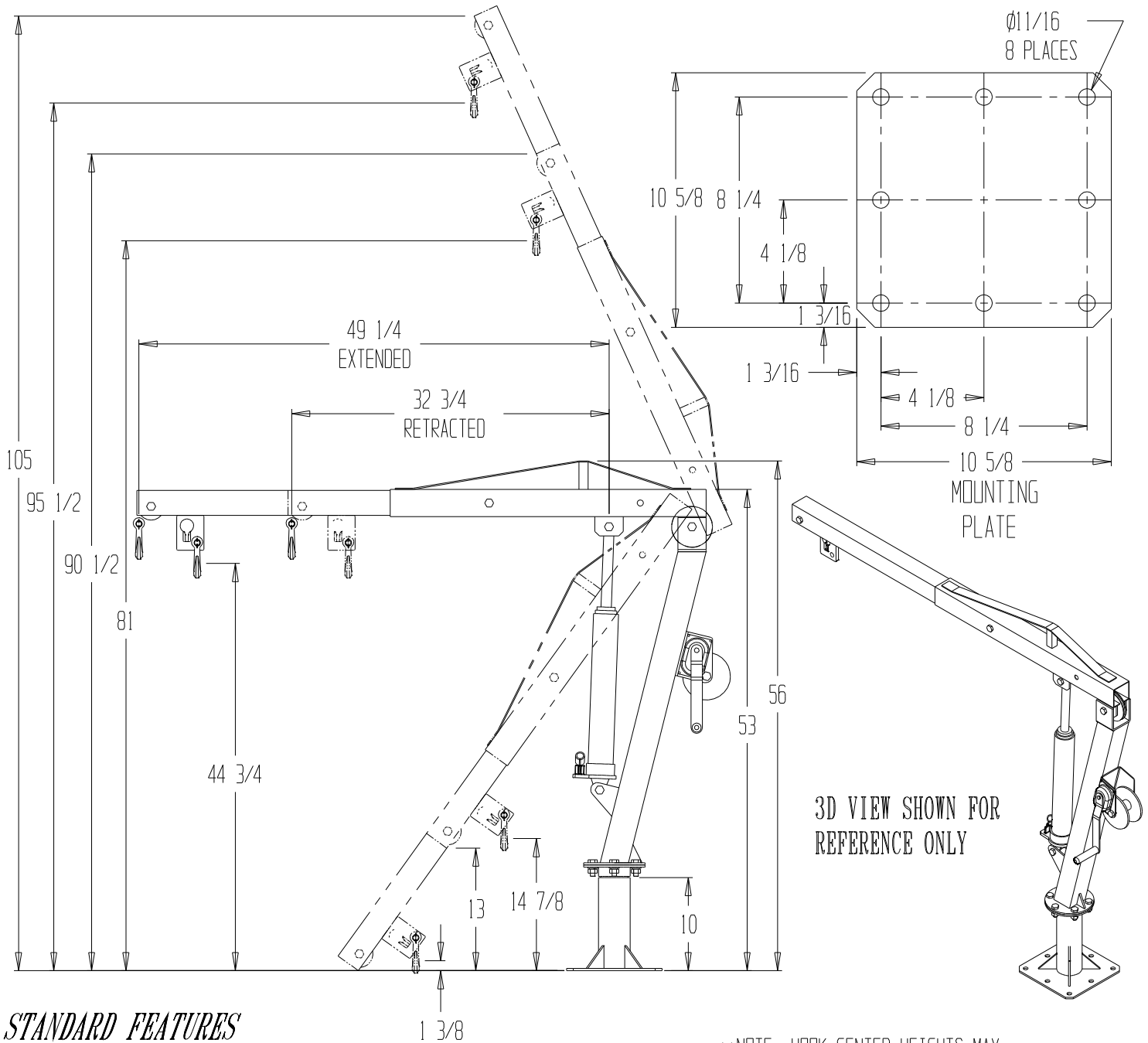


WINCH OPERATED TRUCK JIB CRANE WTJ-2

** Any additions, deletions or omissions must be corrected on this drawing, as this drawing will be considered all inclusive. **
 ** All graphics provided are for reference only. If certain dimensions are critical please verify those dimensions with your salesperson **



STANDARD FEATURES

MODEL NUMBER: WTJ-2
 CAPACITY: 500 LBS. EXTENDED, 1,000 LBS. RETRACTED
 USABLE REACH: 49 1/4\" EXTENDED, 32 3/4\" RETRACTED
 MAX HOOK HEIGHT: 105\" EXTENDED, 90 1/2\" RETRACTED
 MIN. HOOK HEIGHT: 0\" EXTENDED, 13\" RETRACTED
 OVERALL CABLE LENGTH: 14 1/2 FEET
 USABLE CABLE LENGTH: 9 FEET
 YELLOW PAINT FINISH

SPECIAL FEATURES

NONE

PISTON STROKE: 16 3/8\"
 PISTON STROKE PER PUMP: 1/16\"
 CABLE RETRACTS / EXTENDS PER CRANK: 1-1/2\"
 NO. OF CRANKS TO RETRACT / EXTEND CABLE: 72

**NOTE: HOOK CENTER HEIGHTS MAY
 VARY DEPENDING ON HOOK TYPE

A P P R O V A L	I, THE UNDERSIGNED, AGREE THAT THE PRODUCT AS REPRESENTED SATISFIES DESIGN & DIMENSION REQUIREMENTS. I ALSO ACKNOWLEDGE MY DUTY TO CONFIRM PRODUCT & INSTALLATION COMPLIANCE WITH ALL APPLICABLE FEDERAL, STATE AND LOCAL REGULATIONS & STANDARDS.	
	ALL SPECIAL UNITS ARE NON-RETURNABLE	
	[] As drawn	[] As marked
	Signed: _____ Date: _____	
LEAD TIME WILL START UPON RECEIPT OF SIGNED APPROVAL DRAWING		

DISTRIBUTOR'S NAME: VESTIL MANUFACTURING		P.O.#: _
DRAWN BY: ND		W.O.#: _
DATE: 10/8/13	SALES: _	
REFERENCE: _	SCALE: _	DRWG./FILE NAME:
QUOTED LEADTIME: _	QUOTE #: _	WTJ-2