

# RW50 Cable Spool

The cable storage spool is designed for use with Thern davit cranes. In many applications it is necessary to leave the wire rope hook attached to a submerged load, such as a pump or mixer. The Thern RW50 is used to wind up the free end of the wire rope and remove slack from the line.



## RW50 Specifications

description	wind up style cable spool
3/15 in wire rope capacity <sup>1</sup>	140 ft
1/4 in wire rope capacity <sup>1</sup>	75 ft
5/16 in wire rope capacity <sup>1</sup>	50 ft
rated capacity <sup>2</sup>	50 lb

<sup>1</sup> Actual drum capacities may be 25-30% less, due to nonuniform winding. Wire rope tension will also affect drum capacity.

<sup>2</sup> The RW50 does not include a brake and is not to be used for lifting or pulling loads. Minimal tension, up to 50 lb, should be applied to help wire rope spool properly and keep wire rope from birdnesting on the drum.

### 316 STAINLESS STEEL CONSTRUCTION

for extra corrosion resistance in harsh environments.

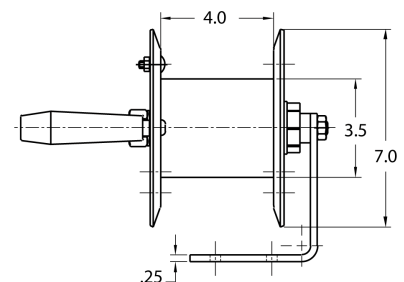
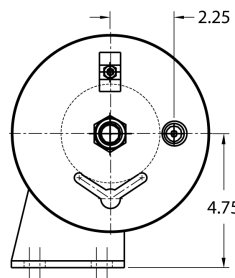
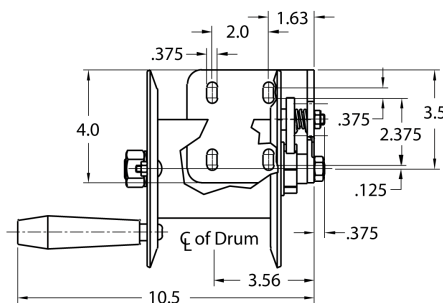
**ADJUSTABLE DRAG MECHANISM** to limit drum recoil and help prevent birdnesting of wire rope when ratchet is released.

**QUICK DISCONNECT ANCHOR** for quickly attaching or removing rope equipped with a swaged ball fitting. Flange clip anchor also included for wire rope without a swaged ball.

**EASY GRIP HANDLE** for quick wind up.

**SPRING LOADED RATCHET PAWL** for operation in any position.

**MOUNTING OPTIONS** for installing to floor, wall, guard rail or Thern crane base. Mounting brackets sold separately.



[www.thern.com](http://www.thern.com)

1.800.843.7648