

# AH Mini-Cat Air Powered Hoists with Pendant and Cord Controls and Hook Suspension

The AH Mini-Cat Series of air hoists was designed with exceptionally low headroom and will easily handle many construction, assembly line and workstation applications.

## Features and Benefits

- Unlimited Duty Cycle**  
For continuous operation
- Extremely Compact & Lightweight Body**  
Allows for easy operation, transportation and storage
- Airtight Hoist**  
Results in efficient use of air
- High Speed Lifting**  
Maximum speed gets jobs done quickly
- Vane Motor Design**  
Permits very fine feathering control
- Aluminum Valve Section**  
Reduces effects of corrosion
- Low Noise Levels**  
Adds to operator comfort
- Disc Motor Brake System**  
For reliable load support
- Nickel Plated Load Chain**  
Resistant to corrosion, abrasion and wear

## Standard Hoist Specifications

- Capacity Range**  
250 – 500 lb.
- Standard Lift**  
10'  
(longer lifts available)
- Standard Pendant or Cord Length**  
4' less than lift  
(longer lengths available)
- Air Supply Requirement**  
19 – 34 cfm at 60 – 90 psi
- Air Lubrication**  
Minimum 10 to 15 drops of oil per minute (0.2 – 0.3 cc/min.)
- Air Filtration**  
Maximum 5 micron air filter or finer required
- Air Inlet Port**  
3/8" NPT
- Air Supply Hose Minimum Size**  
3/8"
- Operating Conditions**  
Temperature range +14° to 140°F  
Humidity 85% or less
- Chain Containers**  
Optional  
Plastic



AH500P



AH500C

# AH Mini-Cat Air Powered Hoists with Pendant and Cord Controls and Hook Suspension

## PENDANT MODEL—SPECIFICATIONS

| Capacity (lbs) | Product Code | Headroom (in) | Standard Lift (ft) | Load Chain Dia. (mm) x Chain Fall Lines | Net Weight with Standard Lift (lbs) | Weight for Additional One Foot of Lift (lbs) |
|----------------|--------------|---------------|--------------------|---|-------------------------------------|--|
| 250            | AH250P       | 12.0          | 10                 | 4 x 1                                   | 19                                  | 0.49   |
| 500            | AH500P       | 12.0          | 10                 | 4 x 1                                   | 19                                  | 0.49   |

### Speeds—ft/min at 90 psi:

| Capacity (lbs) | Product Code | Up        |         | Down      |         |
|----------------|--------------|-----------|---------|-----------|---------|
|                |              | Full Load | No Load | Full Load | No Load |
| 250            | AH250P       | 42 (33)   | 55 (48) | 48 (45)   | 43 (38) |
| 500            | AH500P       | 29 (18)   | 55 (48) | 53 (51)   | 43 (38) |

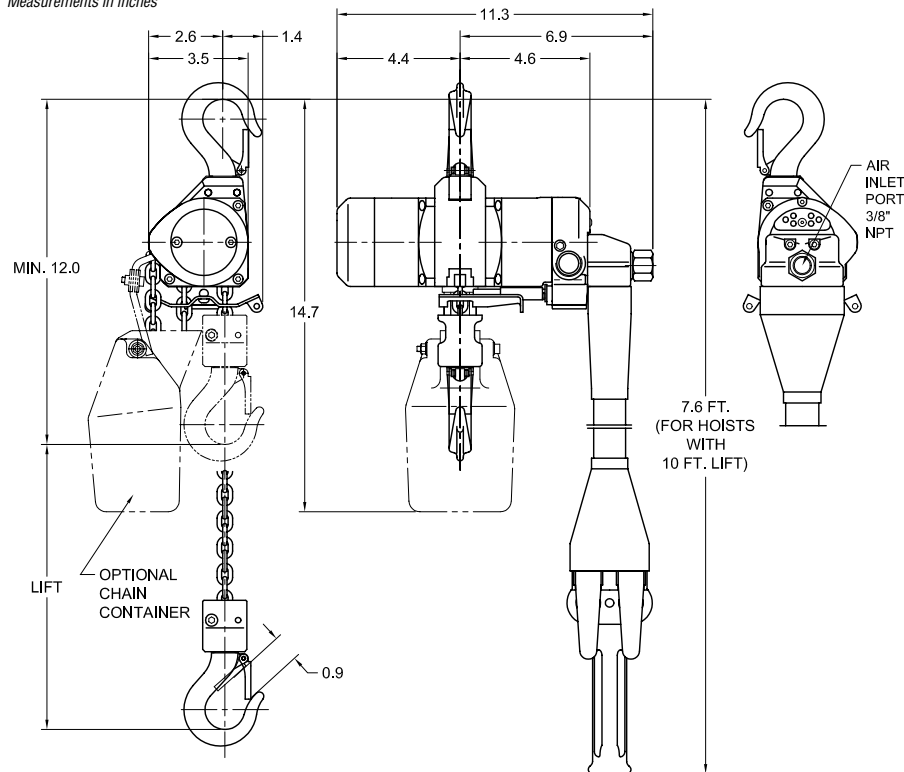
### Air Consumption—cfm at 90 psi:

| Capacity (lbs) | Product Code | Up        |         | Down      |         |
|----------------|--------------|-----------|---------|-----------|---------|
|                |              | Full Load | No Load | Full Load | No Load |
| 250            | AH250P       | 28 (21)   | 31 (24) | 27 (21)   | 26 (20) |
| 500            | AH500P       | 26 (19)   | 31 (24) | 28 (22)   | 26 (20) |

Values in parentheses for air supply at 60 psi.

## PENDANT MODEL—DIMENSIONS

Measurements in inches



AH500P

**CORD MODEL—SPECIFICATIONS**

| Capacity (lbs) | Product Code | Headroom (in) | Standard Lift (ft) | Load Chain Dia. (mm) x Chain Fall Lines | Net Weight with Standard Lift (lbs) | Weight for Additional One Foot of Lift (lbs) |
|----------------|--------------|---------------|--------------------|---|-------------------------------------|--|
| 250            | AH250C       | 12.0          | 10                 | 4 x 1                                   | 15                                  | 0.26   |
| 500            | AH500C       | 12.0          | 10                 | 4 x 1                                   | 15                                  | 0.26   |

**Speeds—ft/min at 90 psi:**

| Capacity (lbs) | Product Code | Up        |         | Down      |         |
|----------------|--------------|-----------|---------|-----------|---------|
|                |              | Full Load | No Load | Full Load | No Load |
| 250            | AH250C       | 47 (37)   | 61 (53) | 51 (47)   | 45 (40) |
| 500            | AH500C       | 32 (20)   | 61 (53) | 56 (54)   | 45 (40) |

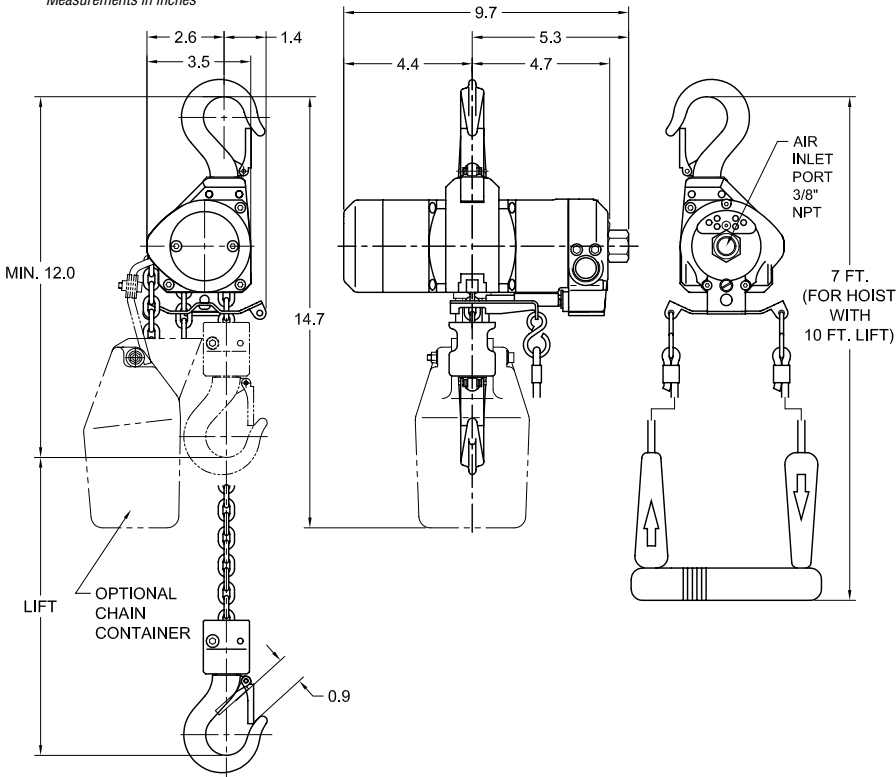
**Air Consumption—cfm at 90 psi:**

| Capacity (lbs) | Product Code | Up        |         | Down      |         |
|----------------|--------------|-----------|---------|-----------|---------|
|                |              | Full Load | No Load | Full Load | No Load |
| 250            | AH250C       | 32 (24)   | 34 (27) | 30 (24)   | 28 (23) |
| 500            | AH500C       | 29 (21)   | 34 (27) | 32 (26)   | 28 (23) |

Values in parentheses for air supply at 60 psi.

**CORD MODEL—DIMENSIONS**

Measurements in inches



AH500C

## AH Mini-Cat Air Powered Hoists with Manipulator Control and Hook Suspension

Harrington's AH Mini-Cat Series air hoists also offer a unique ergonomic manipulator control feature designed to support the special repetitive working practices of assembly line and workstation areas in a wide variety of industries.

Refer to page 4 for standard hoist specifications.

### Unique Features and Benefits

#### Manipulator Control

Unique one-handed control replaces standard pendant or cord.

This design is adjustable for either left- or right-handed operation.

Permits the operator to have a free hand to easily position the load.

### Unique Hoist Specifications

#### Standard Lengths

6.5' Lift—9' reach (approx.)

13' lift—17' reach (approx.)  
(reach equals lift plus headroom)

#### Chain Containers

Standard  
Plastic



AH500M



**MANIPULATOR MODEL—SPECIFICATIONS**

| Capacity (lbs) | Product Code | Headroom (in) | Standard Lift (ft) | Load Chain Dia. (mm) x Chain Fall Lines | Net Weight with Standard Lift (lbs) | Weight for Additional One Foot of Lift (lbs) |
|----------------|--------------|---------------|--------------------|---|-------------------------------------|--|
| 250            | AH250M       | 33.0          | 6.5                | 4 x 1                                   | 24                                  | 0.47   |
| 500            | AH500M       | 33.0          | 6.5                | 4 x 1                                   | 24                                  | 0.47   |

**Speeds—ft/min at 90 psi:**

| Capacity (lbs) | Product Code | Up        |         | Down      |         |
|----------------|--------------|-----------|---------|-----------|---------|
|                |              | Full Load | No Load | Full Load | No Load |
| 250            | AH250M       | 41 (32)   | 54 (47) | 47 (44)   | 42 (37) |
| 500            | AH500M       | 29 (18)   | 54 (47) | 53 (50)   | 42 (37) |

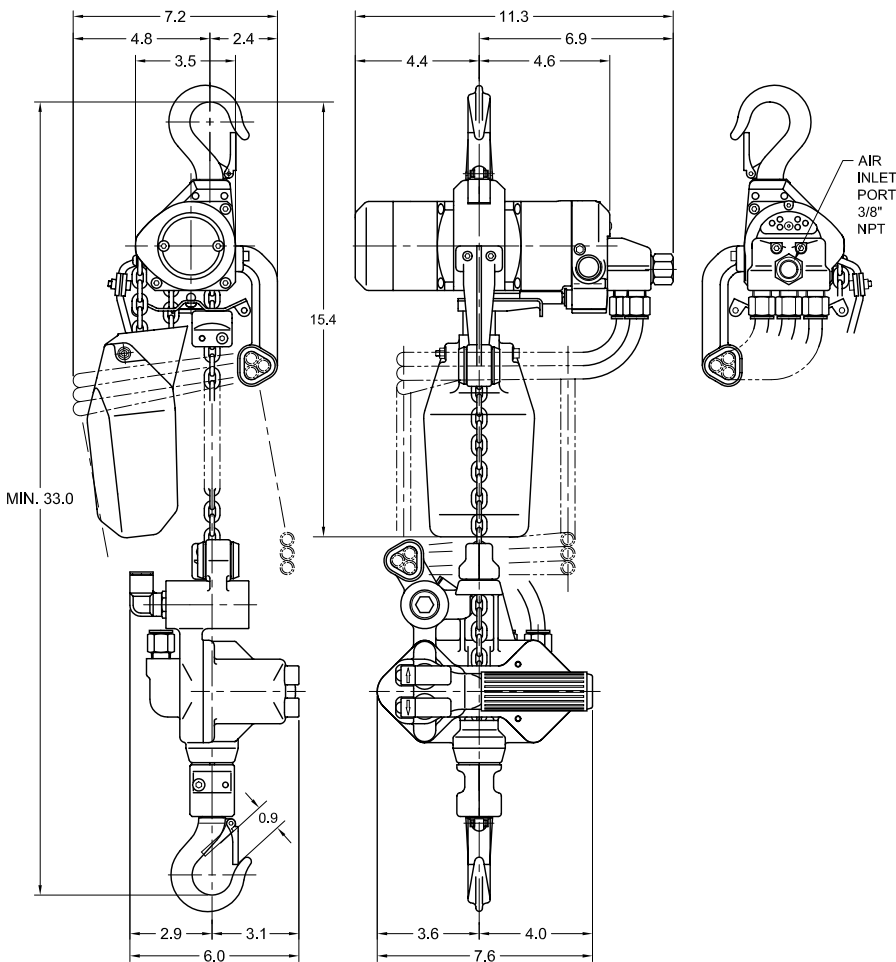
**Air Consumption—cfm at 90 psi:**

| Capacity (lbs) | Product Code | Up        |         | Down      |         |
|----------------|--------------|-----------|---------|-----------|---------|
|                |              | Full Load | No Load | Full Load | No Load |
| 250            | AH250M       | 28 (21)   | 31 (24) | 27 (21)   | 26 (20) |
| 500            | AH500M       | 26 (19)   | 31 (24) | 28 (22)   | 26 (20) |

Values in parentheses for air supply at 60 psi.

**MANIPULATOR MODEL—DIMENSIONS**

Measurements in inches



AH500M

# AH Mini-Cat Air Powered Hoists with Lug Suspension

## MINI TROLLEY—SPECIFICATIONS

| Maximum Capacity (lbs) | Product Code | Adjustable Beam Width B (in) | Minimum* Radius for Curve (in) | Net Weight (lbs) | Approximate Shipping Weight (lbs) |
|------------------------|--------------|------------------------------|--------------------------------|------------------|-----------------------------------|
| 525                    | ET525        | 1.97 – 3.94                  | 23.6                           | 4.0              | 5.0                               |

Lug mount only.

\*For larger flanges, hook mount AH air hoists to PTF2/GTF2 1/2 or 1 Ton trolleys.

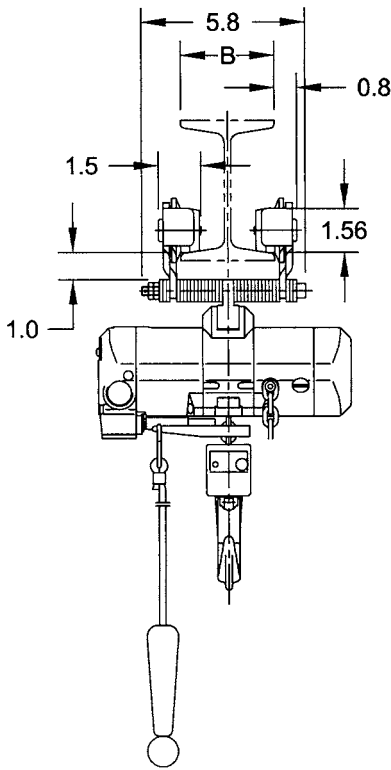


ET525

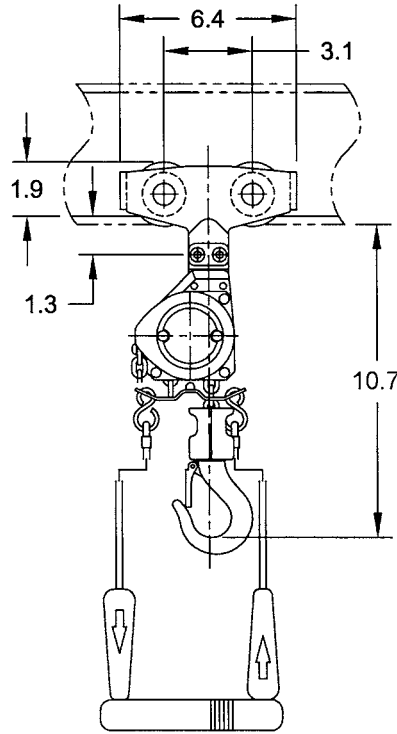
## MINI TROLLEY—DIMENSIONS

Measurements in inches

Dimensions for pendant and cord controls are identical.



AH500C



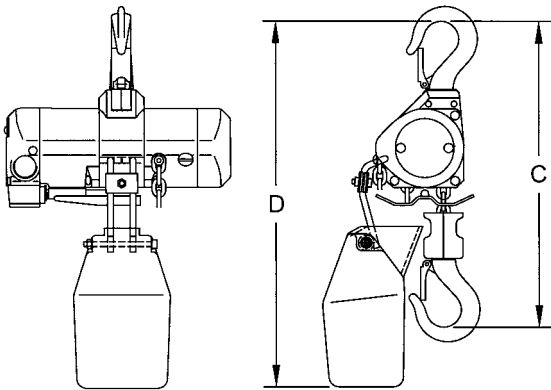
AH500C

# AH Mini-Cat Air Powered Hoists with Options

## HOISTS WITH PLASTIC CHAIN CONTAINERS—DIMENSIONS

| Hoist Product Code | Max. Lift (ft) | Container Headroom D (in) | Hoist Headroom C (in) |
|--------------------|----------------|---------------------------|-----------------------|
| AH250C/P           | 10             | 14.7                      | 12.0                  |
| AH500C/P           | 20             | 16.1                      |                       |

Chain containers are easily installed.



AH with Chain Container

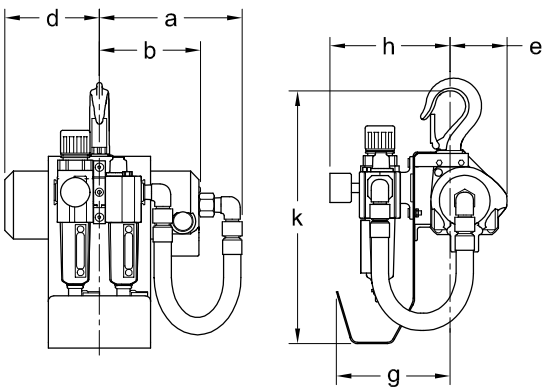
## HOISTS WITH L, FL AND FRL—DIMENSIONS

| Cap. (lbs) | Product Code | a (in) |       | b (in) | d (in) | e (in) | g (in) | h (in) |     | k (in) |
|------------|--------------|--------|-------|--------|--------|--------|--------|--------|-----|--------|
|            |              | C      | P & M |        |        |        |        | L & FL | FRL |        |
| 250        | AH250C/P/M   | 6.6    | 8.2   | 4.7    | 4.4    | 2.6    | 5.3    | 4.2    | 5.5 | 11.7   |
| 500        | AH500C/P/M   | 6.6    | 8.2   | 4.7    | 4.4    | 2.6    | 5.3    | 4.2    | 5.5 | 11.7   |

L = Lubricator

FL = Filter and Lubricator

FRL = Filter, Regulator and Lubricator



AH with L, FL and FRL