



**2000# Double
Line Lift Capacity**



Winch and Hoist

OPERATION and MAINTENANCE

OF

All 115 Volt AC Winches

Main Parts List for 100A, 150A

Used with Supplement Parts List for 800

READ THIS BEFORE OPERATING UNIT

INSTALLATION:

Mount on clean, flat surface. Bolt down with 6-1/2" bolts. For ease of service, we do not recommend welding frame to surface.

Unit should be plugged into a 115 Volt A.C. grounded receptacle. Use of extension cords may cause power loss at full capacity. Make sure the voltage and type of current stamped on the name plate is used. The 115 Volt units require 19 amps. service for maximum lift, and uses a manual reset circuit breaker rated at 20 amps.

For additional safety, a power disconnect may be installed to provide a means of cutting power in place of using the power cord to disconnect.

Before the unit is wall mounted, or mounted upside down, remove P/N 286260 Oil Plug Valve and exchange with P/N 286250 Oil Plug located below the control box on the worm gear housing cover.

CABLE CONNECTION AND CABLE SAFETY:

Maintain at least 4 wraps of cable on the drum at the maximum reach. The drum cable clamp is not designed to hold load. Inspect the winch, sheaves and cable frequently. Especially watch for frayed cable, loose parts and worn components which may be hazardous. Use the correct size and length of cable for the job. We recommend use of 1/4" cable for most jobs up to 2000 lb. double line. Always provide a 5 to 1 safety factor.

The cable tensioner is designed to prevent the cable from riding over the drum flanges and to maintain a constant pressure against the cable to keep it from binding.

When installing the cable, cable should be placed between the drum and the tensioner, bringing cable around drum to hold in flange. Push cable through hole and secure screws so that they do not extend through the drum flange and interfere with cable tensioner. Be sure cable is wrapped as evenly as possible on drum.

For best results, use only enough cable to meet specific job requirements.

Worn cable is dangerous. Replace cable that has become frayed, broken, kinked or abraded.

OPERATION:

These units are designed for intermittent duty operation. Mfg. recommends a 25% duty cycle. That is, for good motor life, usage of 15 minutes out of one hour is preferable.

To prevent shock loading, slowly remove slack from cable before full load is moved.

The remote control switch is a special 4 wire control which is part of the dynamic brake control system. Changing the switch to some other type will eliminate the braking action. Use only factory provided switch.

Remote switch provides forward and reverse control through a 24 volt transformer. Lifting power is the same in either direction.

**MY-TE WINCH-HOISTS ARE DESIGNED
FOR MATERIAL HANDLING USAGE.**

MAINTENANCE:

Check all sheaves, rollers and areas of friction. Be sure they turn freely. Misalignment of cable, dragging sheaves, or rollers will consume a great amount of power.

If the unit is installed outside, be sure to provide a cover to protect motor and controls from the weather. When the unit is in operation be sure cover is completely removed.

Periodic inspection of switch and power cord should be made to detect any damage or cuts which would require replacement.

The gearbox oil is shared between the spur and worm gear housings. The factory-installed oil is a Shell product; Omala 68. It is an EP type industrial gear oil, ISO Grade 68. If this is not available, an SAE 20 weight, non-detergent motor oil is acceptable. Standard capacity is 18 ounces.

TROUBLE SHOOTING AND REMEDIES:

CAUTION: BEFORE SERVICING OR INSPECTING UNIT FOR PROBLEMS BE SURE TO DISCONNECT POWER.

If the unit does not run, check power supply. Be sure correct voltage and frequency are being used. Remove power plug and remove control box cover. Visually inspect for loose wires, stuck contacts on relays, and screws which may have worked loose.

If the unit runs but braking is not instantaneous, check resistors and motor brush condition. Bad resistors will affect the dynamic braking. Check resistors for cracked porcelain and exposed wire. Replace as needed. To check resistors electrically, test individually with a continuity test. On ohmmeter, each resistor should have a value of 4 ohms and together a resistance of 2 ohms.

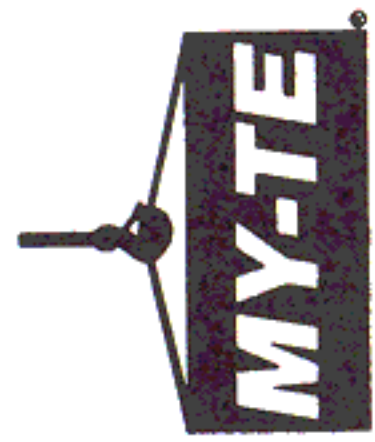
Care should be taken to keep the armature in good condition which may be accomplished by lightly rubbing commutator with a rubstone.

Check brushes to see that they seat on the commutator and are not cracked or badly worn. Replace as needed. Brush springs should provide enough tension to keep brushes seated.

If the unit does not operate properly after the above remedies, contact a qualified electrician or the factory.

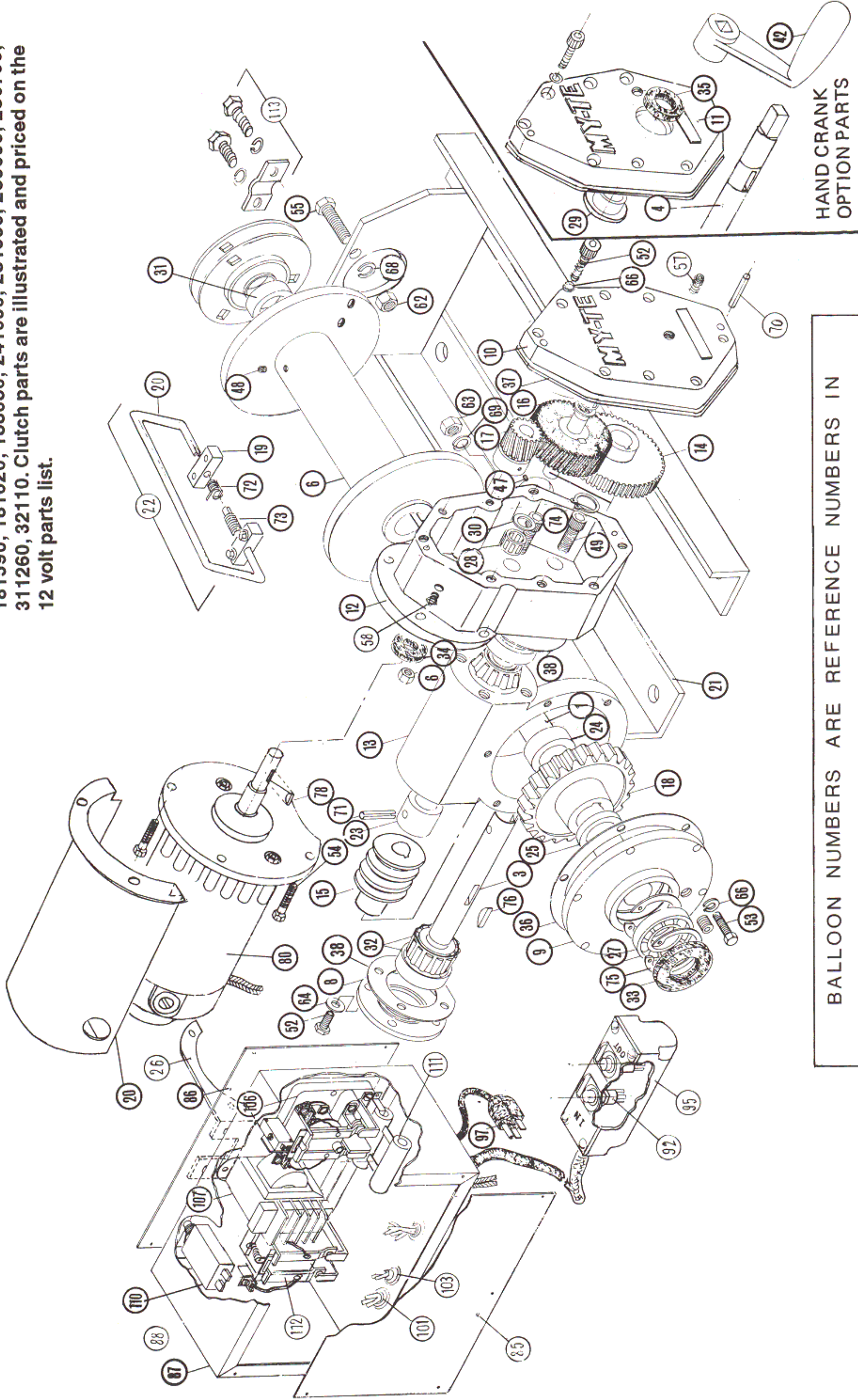
WARRANTY:

All My-te winch-hoists are designed for material handling use only. My-te Products, Inc. warrants each My-te winch-hoist to be free of defects in material and workmanship for a period of one year. This warranty does not cover abuse, neglect or use above or beyond rated capacity and duty cycle. Warranty coverage includes shipping charges, one way, by standard ground service. Warranty does not cover cost of installation or removal of winch-hoist from service or loss due to downtime or time out of service. My-te will not reimburse unauthorized warranty expense. The final responsibility for fit of winch-hoist with application rests with end user. The warranty is void if the winch-hoist is altered or parts substituted. This warranty is limited to repair or replacement at manufacturer's factory or a point designated by the manufacturer. Inspection by the manufacturer will determine manufacturer's liability.



115 Volt Parts Diagram

If the clutch option is ordered, this model uses P/N 118150 in place of 118160, 052510 in place of 052530 and P/N 171310 is deleted. Additional parts used are P/N 181510, 181520, 181580, 181590, 181620, 188080, 241030, 281530, 283030, 286750, 311260, 32110. Clutch parts are illustrated and priced on the 12 volt parts list.



BALLOON NUMBERS ARE REFERENCE NUMBERS IN PARTS LIST. SPECIFY PART NUMBER WHEN ORDERING.

9880 EAST 30TH STREET / INDIANAPOLIS, INDIANA 46229 / 317-897-9880

My-te Winch and Hoist Parts List

MY-TE 115 VOLT WINCH & HOIST UNITS

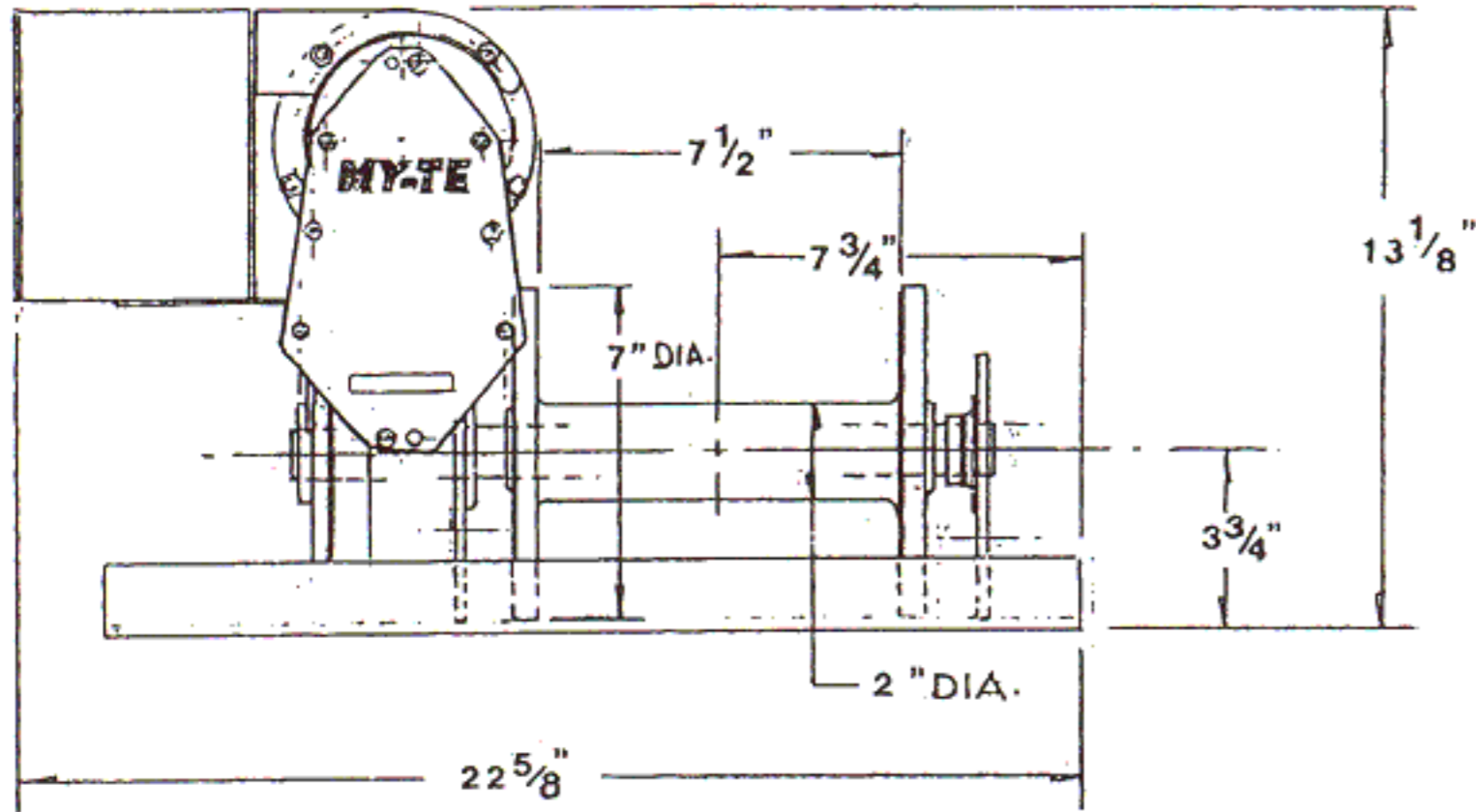
To insure receiving correct part, always give serial number and model number of winch & hoist unit.

Ref. Part Qty.			Ref. Part Qty.		
No.	Part No.	Part Name/Description	No.	Part No.	Part Name/Description
1	052530	1 Main Shaft - Long-w/o Clutch	37	241520	1 Gasket, Spur Gear Hsg.
*	052540	1 Main Shaft - Short w/o Clutch (150A)	38	241530	2 Gasket, End Cap 1/32
3	058010	1 Worm Shaft Assy. w/Spacer/Pin	*	241540	2 Gasket, End Cap.010
4	058020	1 Worm Shaft Assy. w/Spacer/Pin (HC)	*	241550	1 Gasket, Switch Housing
*	068060	1 Drum Assy., Short w/Hdw.(150A)	*	248021	1 Seal & Gasket Kit Assy. - 115V
6	068140	1 Drum Assy., Cast w/Hdw.	42	251030	1 Hand Crank Machined (HC)
8	081510	1 Cap, Worm Gear Housing	*	281010	4 Screw, Resistor 6-32x3/8 RHMS
9	082010	1 Cover, Worm Gear Housing	*	281520	6 Screw, Relay Mtg 10-32x3/8 RHMS
20	082150	1 Cover, Motor-Metal	*	281530	2 Screw, Brace 10-32x3/4 RHMS
10	088160	1 Cover, Spur Gear Hsg. w/Bearing	*	282250	1 Screw, Solenoid Mtg. 1/4-20x1/2
11	088161	1 Cover, Spur Gear Hsg. w/Bearing (HC)	47	282750	1 Set Screw, Pinion 10 x 3/8 SSS
12	088170	1 Housing, Spur Gear, w/Bearing	48	282770	3 Set Screw, Drum 5/16-18 SSS
13	088090	1 Housing, Worm Gear, w/Studs	49	283020	4 Screw, Spur/WGH, 5/16-18x1 SHCS
14	112010	1 Spur Gear	*	283750	2 Screw, Cable Clamp 1/4x5/8 HHCS
15	113010	1 Worm	52	283080	8 Screw, Cover 1/4-20x3/4 SHCS
16	118040	1 Idler Gear Assy. w/Shaft	53	283770	14 Screw, Wrm Gr Hsg 1/4 x 7/8 HHCS
17	118110	1 Pinion Assy. w/S.S.	54	283790	4 Screw, Mtr Mtg 1/4-20x11/4 HHCS
18	118160	1 Worm Gear Assy. w/S.S.	55	284020	3 Screw, Frame/Flg 5/16x3/4 HHCS
19	143750	2 Block, Cable Tensioner	*	285750	3 Stud, W.G.H. 3/8-16x11/4
20	144020	1 Tensioner Bar Only - Std.	57	286250	2 Oil Plug 1/8 NPT
*	148030	1 Frame Assy., Shorty	58	286260	1 Valve, Oil Plug 1/8 NPT
21	148170	1 Frame Assy., Long	*	286510	4 Nut, Resistor/Brace 6-32 Hex
22	148360	1 Tensioner Bar Assy., Std. w/Hdw.	*	286530	8 Nut, Solenoid Term.-Small 10-32
23	171270	1 Spacer, Worm Gear 1"x1.140	*	286540	4 Nut, Solenoid mtg 1/4-20 Hex
24	171280	1 Spacer, Worm Gear Hsg-Thick	62	286550	3 Nut, Flangette 5/16-18 Hex
25	171310	1 Spacer, Worm Gear Hsg-Thin	63	286590	3 Nut, W.G.H. 3/8-16 Hex
26	182032	1 Brace, Control Box	64	286760	4 Washer, Flat-Cap & Cover
27	211010	2 Bearing Main Shaft	*	287030	13 Lockwasher, Int.Str. #10
28	211060	2 Needle Bearing	66	287041	8 Lockwasher Hi-Collar, 1/4.
29	211530	2 Bushing, Bronze (Hand Crank)	*	287050	4 Lockwasher, Int. 1/4
30	212010	2 Thrust Washer	68	287060	3 Lockwasher 5/16 Split.
31	218010	1 Bearing Assy., Flangette	69	287070	3 Lockwasher, W.G.H. 3/8
32	218020	2 Bearing Assy., Worm Shaft	70	311271	2 Spring Pin, Spur Gear Hsg. (1 1/2" Lg.)
33	241010	2 Oil Seal, Main Shaft	71	311280	1 Spring Pin, Worm Spacer
34	241020	1 Oil Seal, Motor Shaft	72	311310	1 Spring, Cable Ten. Bar L.H.
35	241040	1 Oil Seal, Hand Crank	73	321090	1 Spring, Cable Ten. Bar R.H.
36	241510	1 Gasket, Worm Gear Housing			
74	321520	2 Snap Ring, Worm Shaft			
75	321530	4 Snap Ring, Worm Gear Hsg.			
76	351020	2 Key, Worm Shaft			
*	351030	3 Key, Main Shaft			
78	351050	1 Key, Pinion			
*	441160	1 Commutator Stone			
80	441511	1 Motor, 115V			
*	441610	1 Cap, Brush			
*	068060	1 Drum Assy., Short w/Hdw.(150A)			
*	448020	1 Armature Assy., 115V			
*	448030	1 Brush Set, Motor 115V			
85	512020	1 Panel, Plain			
87	518010	1 Ctrol. Box Assy. w. Brkt./Pln.Pnl.			
86	518281	1 Panel Assy. w/Comp. & Brace, 230V			
88	518521	1 Comp. Ctr. Box w/Sw. & Pwr. Crd.			
92	531140	1 Switch, Push Button			
*	532550	2 Guard, Switch Button			
95	538033	1 Hand Sw. Assy., 4W w/ Term.			
97	548030	1 Power Cord Assy. 14/3 w/Term.			
*	551060	8 Terminal, Push-on "Y"			
*	551080	1 Terminal, Female Push-on 1/4"			
101	552020	1 Strain Relief, Motor Wires			
103	552040	2 Strain Relief, Cord & Switch			
*	552540	1 Cable Tie, 4 1/2"			
106	561030	1 Relay, Power DPDT 24 VAC Coil w/ Aux. Sw.			
107	562011	1 Transformer, 115/24 VAC w/Term. Block			
110	562530	1 Circuit Breaker, 20 Amp 115V			
111	563010	2 Resistor, 4 Ohm 25W			
*	563030	2 Bracket, Resistor Mtg.			
*	621020	1 Decal, Oil Level			
*	621130	1 Decal, Circuit Breaker			
*	621250	1 Decal, Drum Warning			
*	621260	1 Decal, Capacity & Serial Number			
*	621270	1 Decal, Safety			
112	561031	1 Relay, Pwr. DPDT 24 VAC Coil w/o Aux Sw.			
113	828090	1 Cable Clamp Assy.			

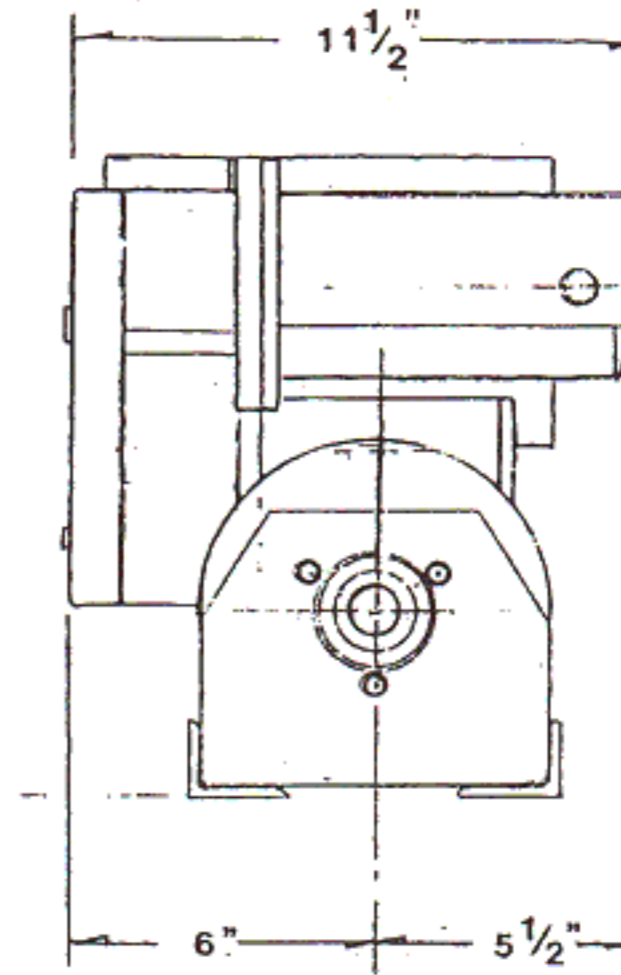
* Not Shown

MINIMUM ORDER - \$10.00

FRONT VIEW



SIDE VIEW



TOP VIEW, FRAME ONLY

