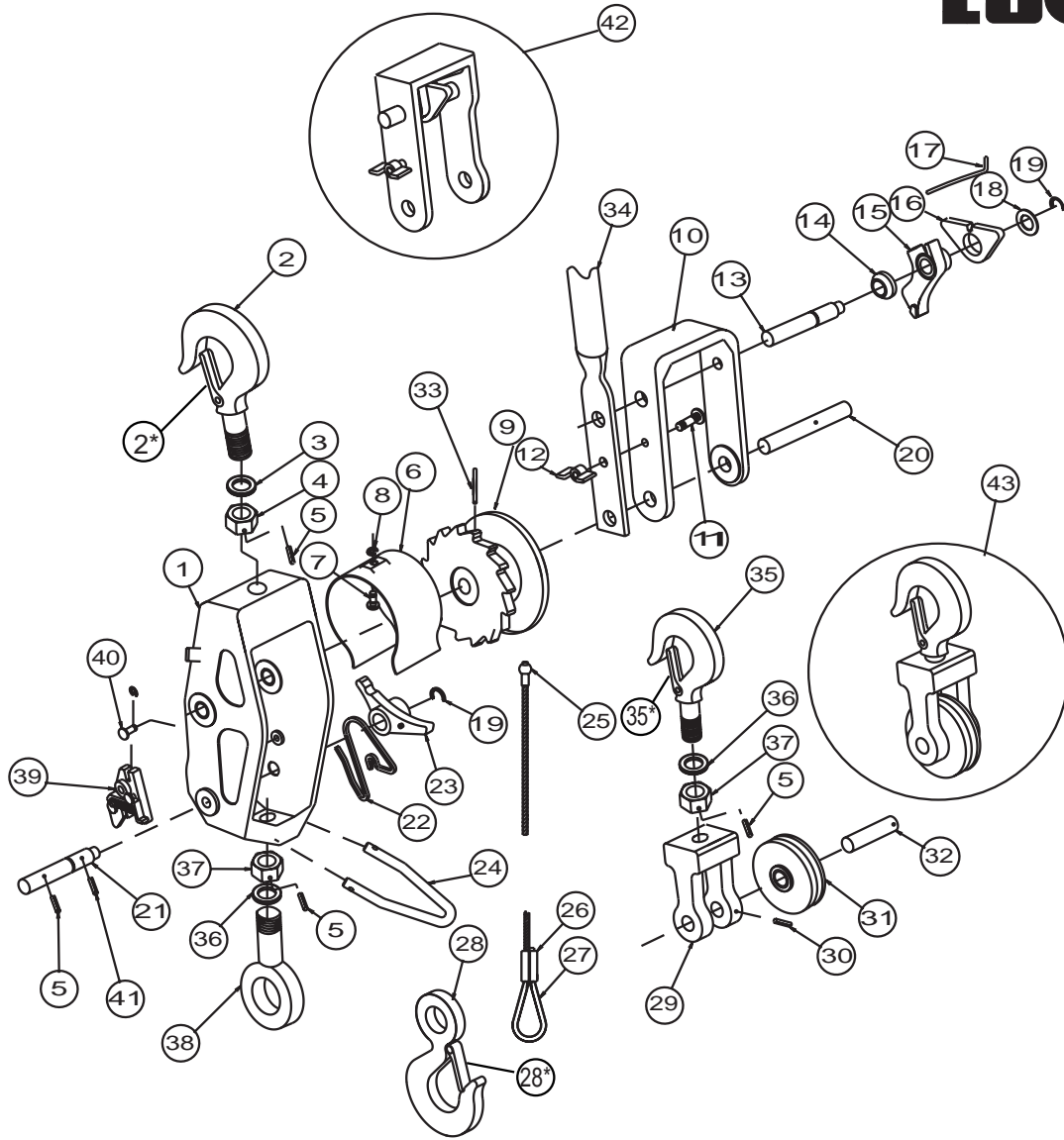


Model 330-RSH

LUG-ALL®



Drawing Ref No.	Description	Qty. Req'd	Lug-All Part No.
1	Main Frame W/ Bushing	1	280
2	Shank Hook W/Latch	2	207
2*	Shank Hook Latch Repair Kit	2	264
3	Hook Washer	2	181
4	Hook Nut	2	182
5	Hook Nut Locking Pin	4	123
6	Cable Shield Assembly	1	183
7	Cable Shield Pin	1	161
8	Cable Shield Retaining Ring	1	162
9	Drum	1	286
10	U-Frame (W/Handle Bolt)	1	193
11	Handle Bolt	1	133
12	Wing Nut	1	119
13	U-Frame Pawl Shaft	1	192
14	Spring Support Roll	1	293
15	U-Frame Pawl	1	216
16	Reverse Lever	1	288
17	U-Frame Spring	1	195
18	Reverse Lever Washer	1	291
19	Snap Shaft Washer	2	111
20	Drum Shaft	1	194
21	Main Frame Pawl Shaft	1	186
22	Main Frame Pawl Spring	1	200

Drawing Ref No.	Description	Qty. Req'd	Lug-All Part No.
23	Main Frame Pawl	1	203
24	Cable Guide	1	204
25	Cable & Drum Anchor	1	212
26	Sleeve Type Cable Clamp	1	149
27	Thimble	1	139
28	Eye Hook W/ Latch	1	137
28*	Eye Hook Latch Repair Kit	1	263
29	Yoke	1	141
30	Shaft Locking Pin	1	143
31	Pulley W/ Bushing	1	152
32	Pulley Shaft	1	112
33	Drum Shaft Locking Pin	1	134
34	Reversible Handle (Red)	1	211
35	Shank Hook W/Latch	1	138
35*	Shank Hook Latch Repair Kit	1	263
36	Hook Washer	1	118
37	Hook Nut	1	122
38	Eye Bolt	1	165
39	Carrier & Actuating Assembly	1	269
40	Carrier Pin & Ring	1	268
41	Actuating Pin On Pawl Shaft	1	279
42	Complete U-Frame Assembly	1	853
43	Complete Pulley Block Assembly	1	803