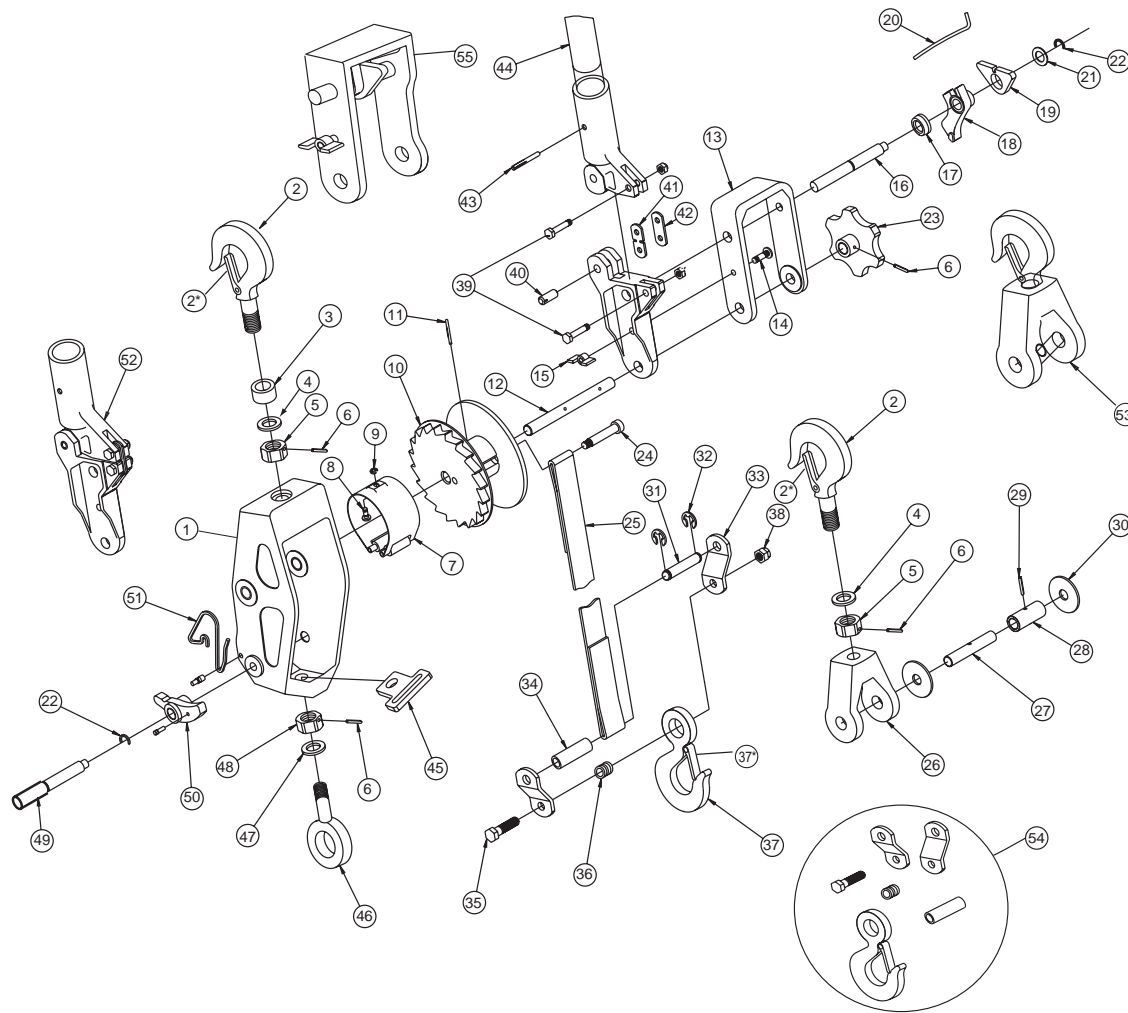


# Model 3-A Web Strap

# LUG-ALL®



Drawing Ref. No	Description	Qty. Req'd	Lug-All Part No.
1	Main Frame W/Bushings	1	510
2	Shank Hook W/Latch	2	207
2*	Shank Hook Latch Repair Kit	2	264
3	Hook Spacer	1	534
4	Hook Washer	2	181
5	Hook Nut	2	182
6	Hook Nut Locking Pin	3	123
7	Web Shield Assembly	1	520
8	Web Shield Pin	1	161
9	Web Shield Ret. Ring	2	162
10	Drum	1	511
11	Drum Shaft Locking Pin	1	134
12	Drum Shaft	1	354
13	U-Frame	1	193
14	Handle Bolt	1	133
15	Wing Nut	1	119
16	U-Frame Pawl Shaft	1	192
17	Spring Support Roll	1	293
18	U-Frame Pawl	1	216
19	Reverse Lever	1	288
20	U-Frame Pawl Spring	1	195
21	Retaining Washer	1	291
22	Snap Shaft Washer	2	111
23	Wind Up Wheel W/Pin	1	352
24	Drum Anchor Screw	1	512
25	Web Strap	1	522
26	Yoke	1	531
27	Pulley Shaft	1	533
28	Pulley Tube	1	545

Drawing Ref. No.	Description	Qty. Req'd	Lug-All Part No.
29	Locking Pin	1	549
30	Pulley Washers (Set of Two)	1	544
31	Web Attachment Pin W/Rings	1	524
32	Web Attachment Pin Ret. Ring (2)	1	347-A
33	Side Link (Set of Two)	1	523
34	Web Attachment Bushing	1	525
35	Eye Hook Attachment Screw	1	527
36	Eye Hook Bushing	1	530
37	Eye Hook W/Latch	1	137
37*	Safety Hook Latch Repair Kit	1	263
38	Eye Hook Attachment Nut	1	528
39	Threaded Link Pins (W/Nuts)	1	521-B
40	Pivot Pin	1	537
41	Stress Link	1	518
42	Overload Link	1	519
43	Groove Tube	1	517
44	Handle Tube W/Grip	1	514
45	Web Guide	1	535
46	Eye Bolt	1	165
47	Hook Washer	1	118
48	Hook Nut	1	122
49	Main Frame Pawl Shaft	1	186
50	Main Frame Pawl	1	203
51	Main Frame Pawl Spring	1	200
52	Handle Assembly W/O Tube	1	515-Z
53	Complete Pulley Block Assy.	1	822
54	Complete Web End Assy.	1	832
55	Complete U-Frame Assy.	1	853
	Complete Handle Assy.	1	513