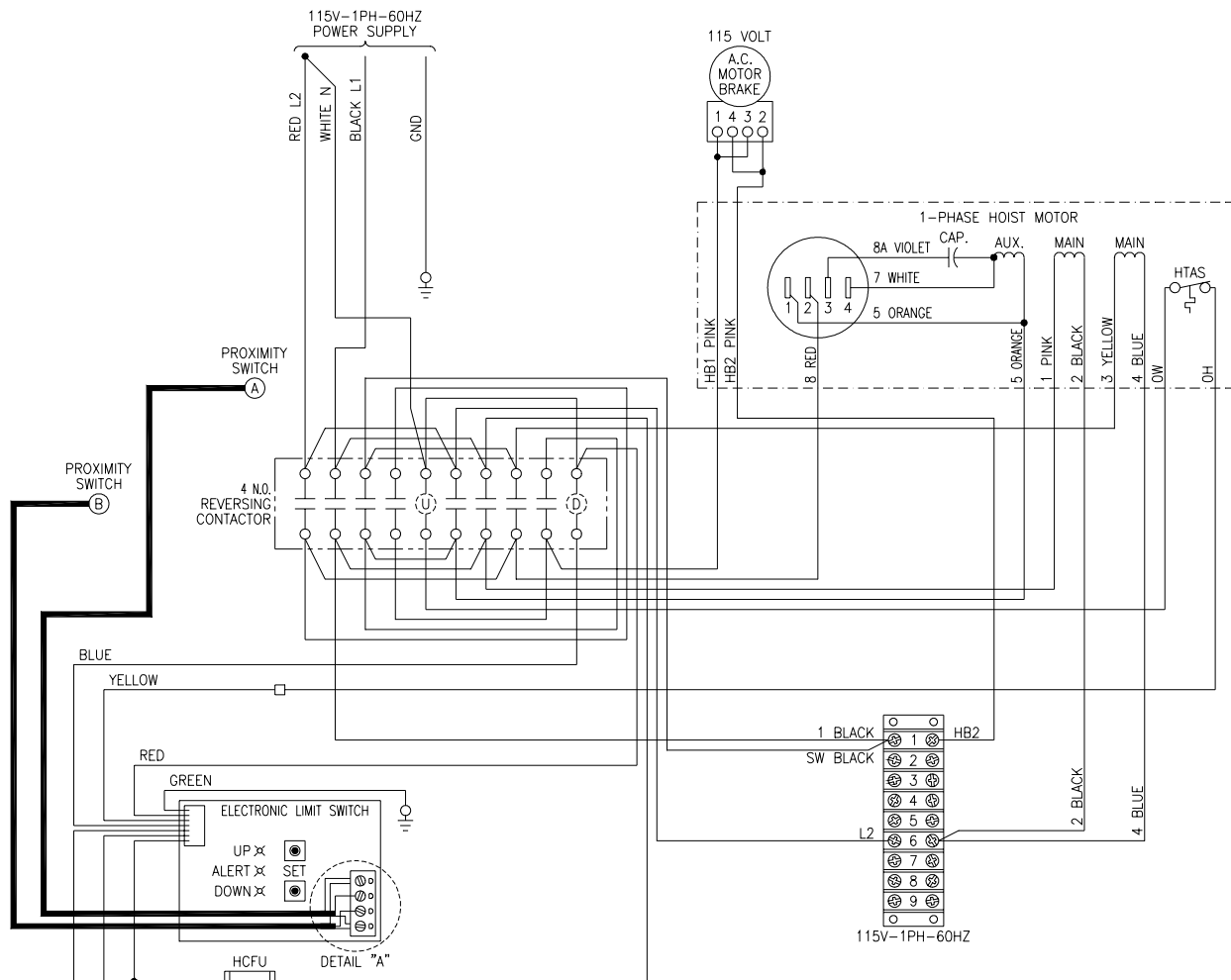


# BUDGIT® Electric Hoist Wiring Diagrams

## 1 PHASE, 115/230 VOLT RECONNECTABLE, SINGLE SPEED HOIST



**NOTE:**  
WHEN RECONNECTING THIS HOIST FOR 230 VOLT THE BRAKE, MOTOR & TRANSFORMER NEED TO BE REWIRED AS ILLUSTRATED ON DRAWING 333211 SHEET 2.

**DANGER:**

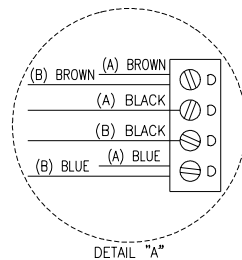
UNLESS HOOK RAISES WHEN "UP" BUTTON IS PRESSED SEVERE HOIST DAMAGE AND A DROPPED LOAD MAY RESULT. CORRECT IMPROPER HOOK DIRECTION BY INTERCHANGING MOTOR LEADS ORANGE (5) AND RED (8). DO NOT CHANGE PUSHBUTTON WIRING.

**WARNING**

THIS EQUIPMENT MUST BE EFFECTIVELY GROUNDED ACCORDING TO APPLICABLE CODES.

**AVERTISSEMENT**

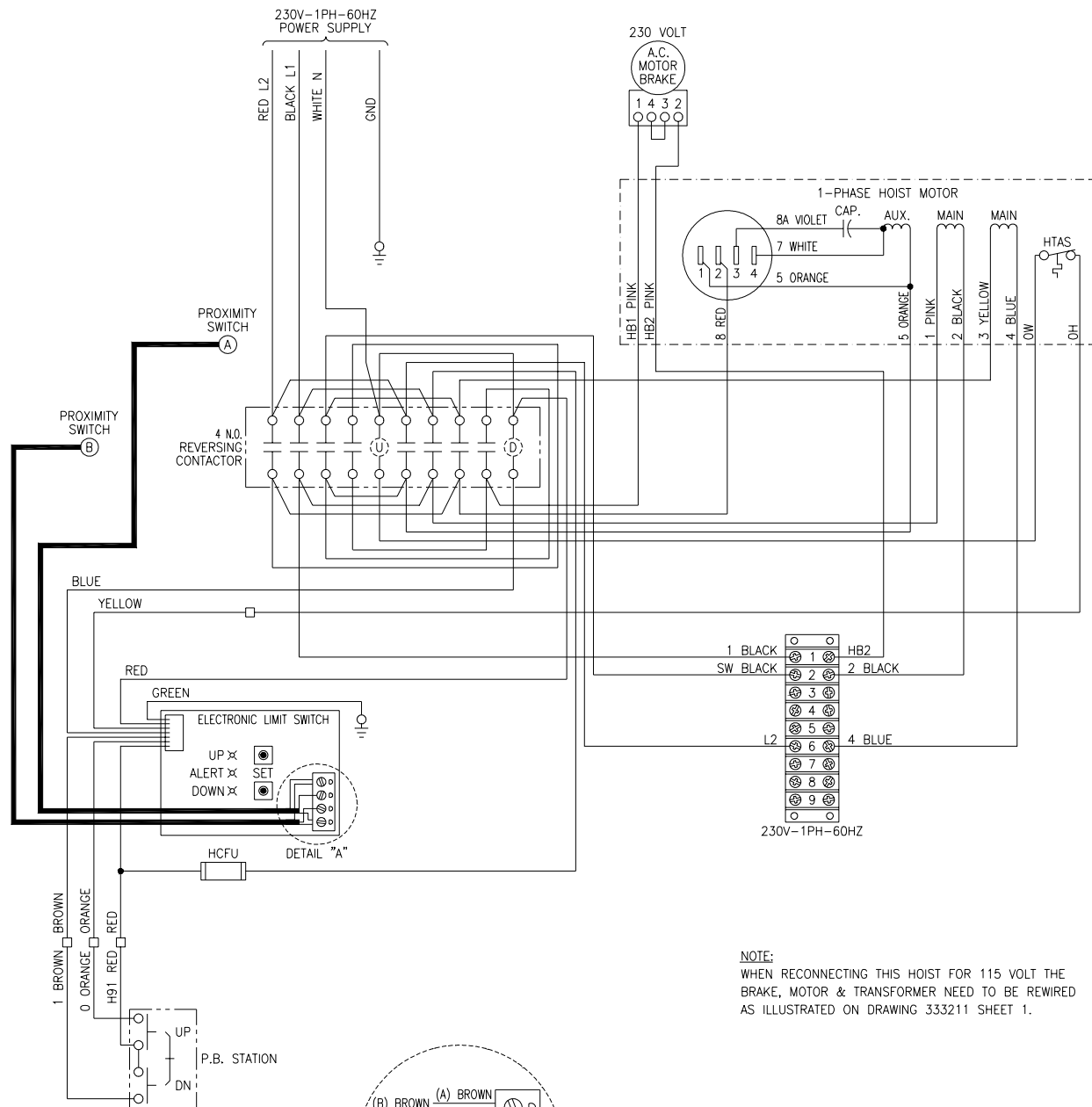
CET EQUIPEMENT DOIT ETRE MIS A LA TERRE EN ACCORDANCE AVEC LES NORMES EN VIGUEUR.



### 115V CONNECTIONS, 1 PHASE

333211-01

# 1 PHASE, 115/230 VOLT RECONNECTABLE, SINGLE SPEED HOIST



**NOTE:**  
WHEN RECONNECTING THIS HOIST FOR 115 VOLT THE BRAKE, MOTOR & TRANSFORMER NEED TO BE REWIRED AS ILLUSTRATED ON DRAWING 333211 SHEET 1.

**DANGER:**

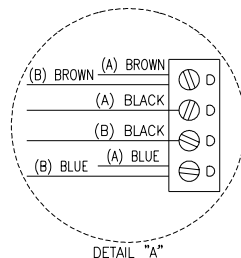
UNLESS HOOK RAISES WHEN "UP" BUTTON IS PRESSED SEVERE HOIST DAMAGE AND A DROPPED LOAD MAY RESULT.  
CORRECT IMPROPER HOOK DIRECTION BY INTERCHANGING MOTOR LEADS ORANGE (5) AND RED (8).  
DO NOT CHANGE PUSHBUTTON WIRING.

**WARNING**

THIS EQUIPMENT MUST BE EFFECTIVELY GROUNDED ACCORDING TO APPLICABLE CODES.

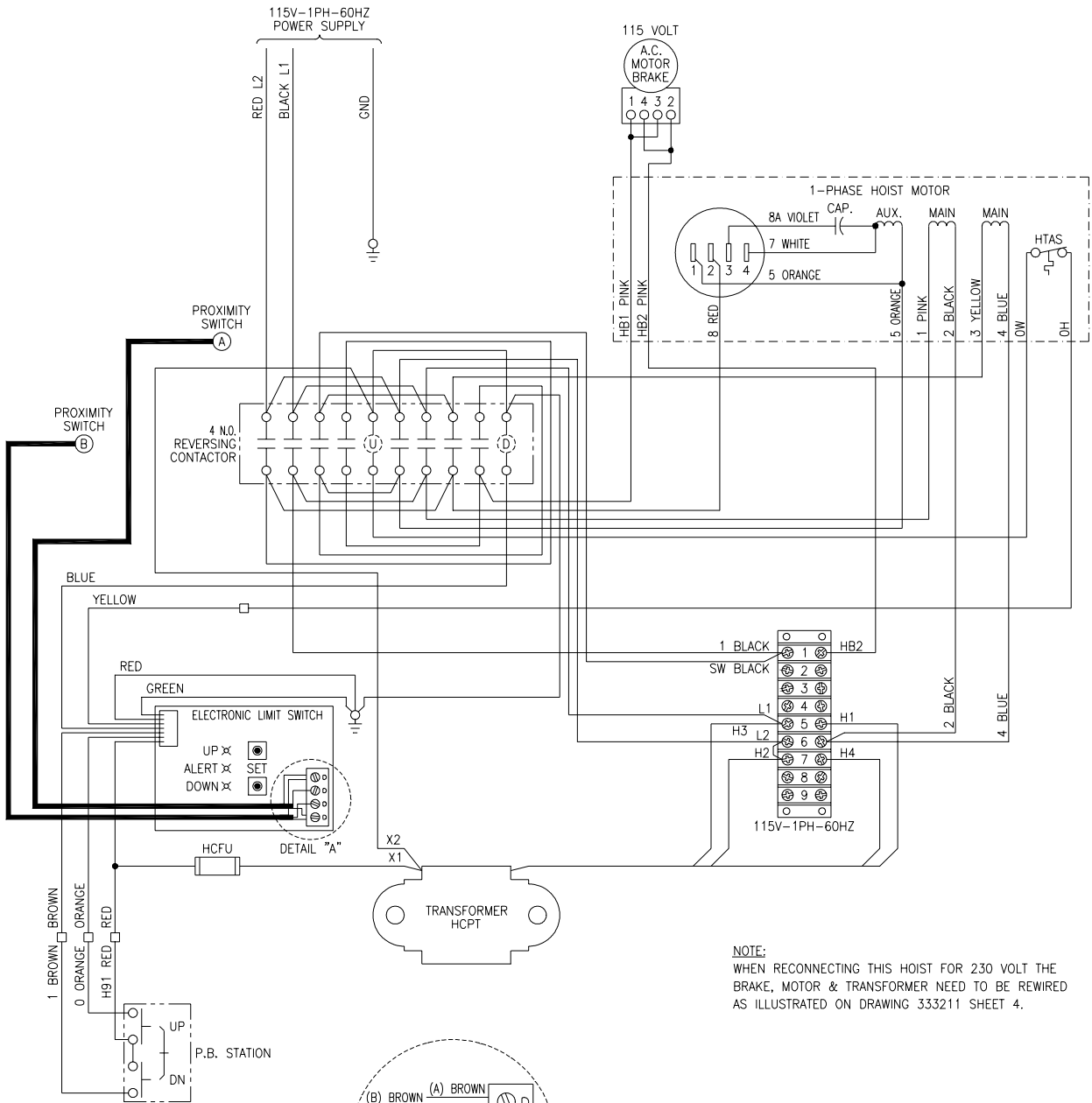
**AVERTISSEMENT**

CET EQUIPEMENT DOIT ETRE MIS A LA TERRE EN ACCORDANCE AVEC LES NORMES EN VIGUEUR.



## 230V CONNECTIONS, 1 PHASE

# 1 PHASE, 115/230 VOLT RECONNECTABLE, SINGLE SPEED HOIST WITH TRANSFORMER

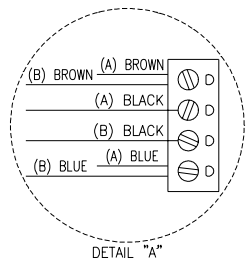


NOTE:  
WHEN RECONNECTING THIS HOIST FOR 230 VOLT THE  
BRAKE, MOTOR & TRANSFORMER NEED TO BE REWIRED  
AS ILLUSTRATED ON DRAWING 333211 SHEET 4.

**DANGER:**  
UNLESS HOOK RAISES WHEN "UP" BUTTON  
IS PRESSED SEVERE HOIST DAMAGE AND A  
DROPPED LOAD MAY RESULT.  
CORRECT IMPROPER HOOK DIRECTION BY  
INTERCHANGING MOTOR LEADS ORANGE (5)  
AND RED (8).  
DO NOT CHANGE PUSHBUTTON WIRING.

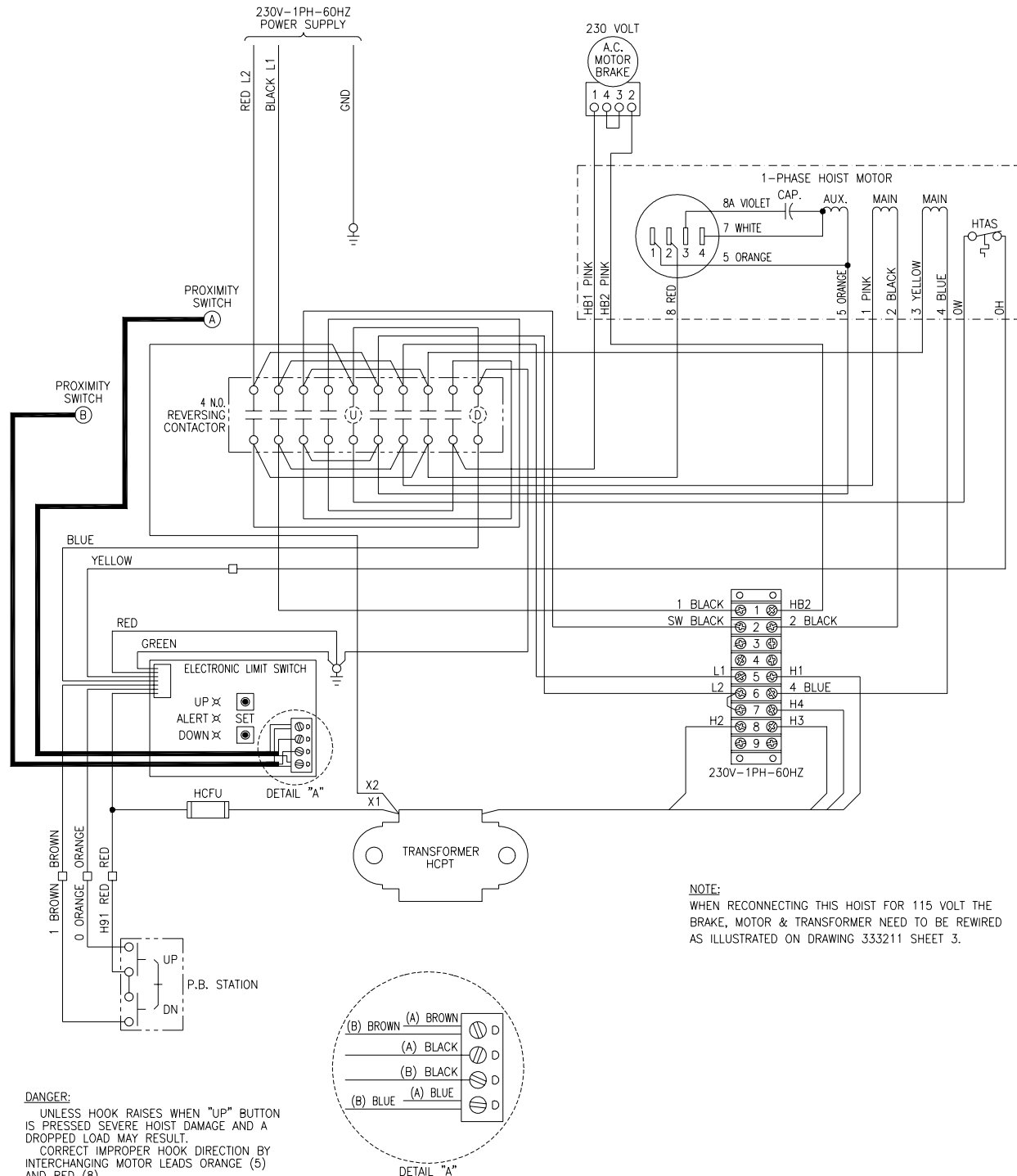
**WARNING**  
THIS EQUIPMENT MUST BE EFFECTIVELY  
GROUNDED ACCORDING TO APPLICABLE  
CODES.

**AVERTISSEMENT**  
CET EQUIPEMENT DOIT ETRE MIS A LA TERRE  
EN ACCORDANCE AVEC LES NORMES EN  
VIGUEUR.



## 115V CONNECTIONS, 1 PHASE

# 1 PHASE, 115/230 VOLT RECONNECTABLE, SINGLE SPEED HOIST WITH TRANSFORMER



**DANGER:**

UNLESS HOOK RAISES WHEN "UP" BUTTON IS PRESSED SEVERE HOIST DAMAGE AND A DROPPED LOAD MAY RESULT.  
CORRECT IMPROPER HOOK DIRECTION BY INTERCHANGING MOTOR LEADS ORANGE (5) AND RED (8).  
DO NOT CHANGE PUSHBUTTON WIRING.

**WARNING**

THIS EQUIPMENT MUST BE EFFECTIVELY GROUNDED ACCORDING TO APPLICABLE CODES.

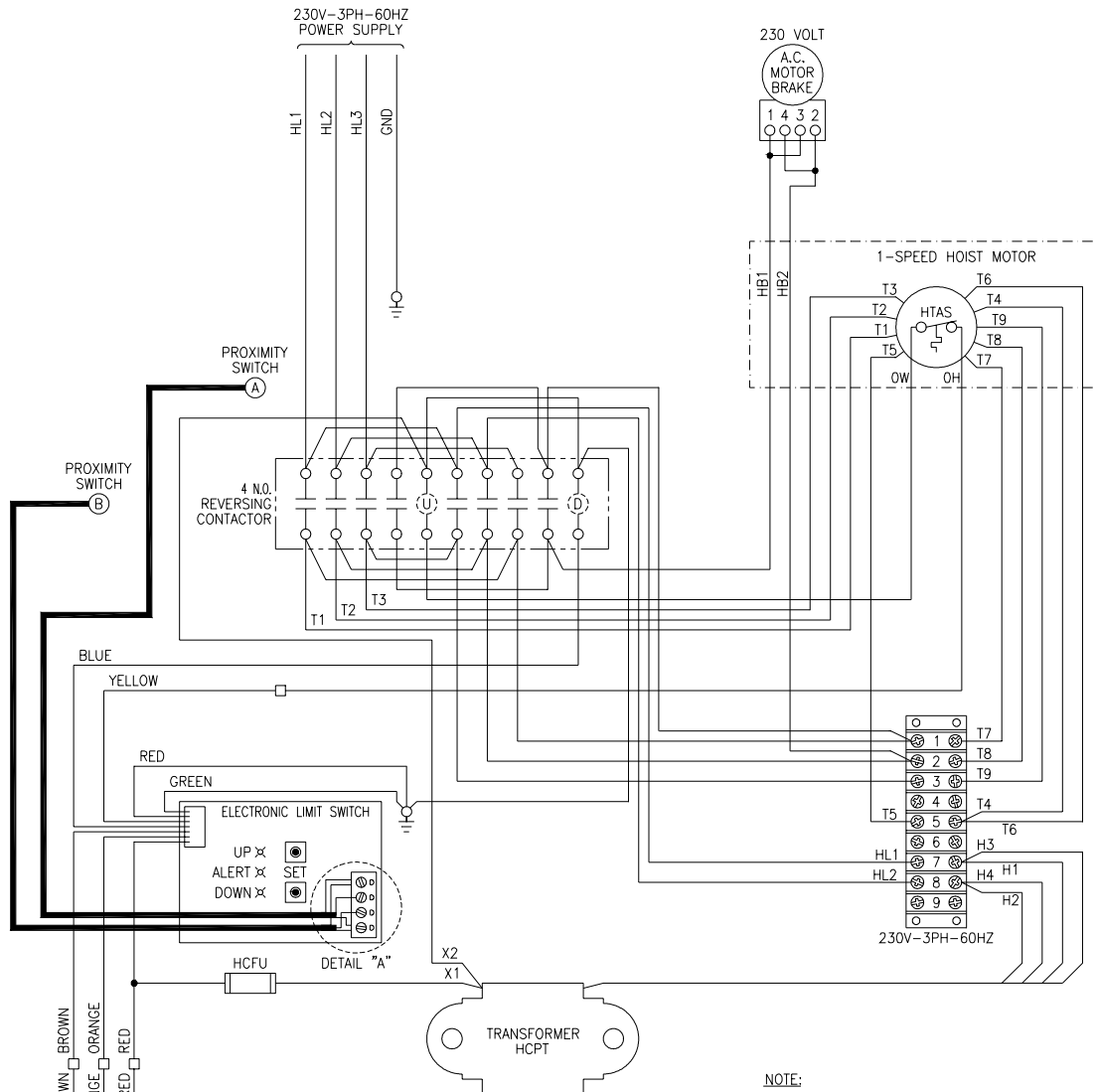
**AVERTISSEMENT**

CET EQUIPEMENT DOIT ETRE MIS A LA TERRE EN ACCORDANCE AVEC LES NORMES EN VIGUEUR.

## 230V CONNECTIONS, 1 PHASE

333211-04

# 3 PHASE, 230/460 VOLT RECONNECTABLE, SINGLE SPEED HOIST



**NOTE:**  
WHEN RECONNECTING THIS HOIST FOR 460 VOLT THE  
BRAKE, MOTOR & TRANSFORMER NEED TO BE REWIRED  
AS ILLUSTRATED ON DRAWING 333213 SHEET 2.

**DANGER:**

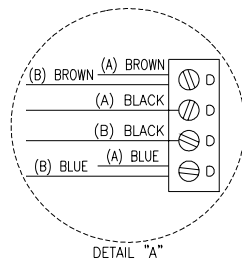
UNLESS HOOK RAISES WHEN "UP" BUTTON  
IS PRESSED SEVERE HOIST DAMAGE AND A  
DROPPED LOAD MAY RESULT.  
CORRECT IMPROPER HOOK DIRECTION BY  
INTERCHANGING INPUT POWER L1 AND L3  
DO NOT CHANGE PUSHBUTTON WIRING.

**WARNING**

THIS EQUIPMENT MUST BE EFFECTIVELY  
GROUNDED ACCORDING TO APPLICABLE  
CODES.

**AVERTISSEMENT**

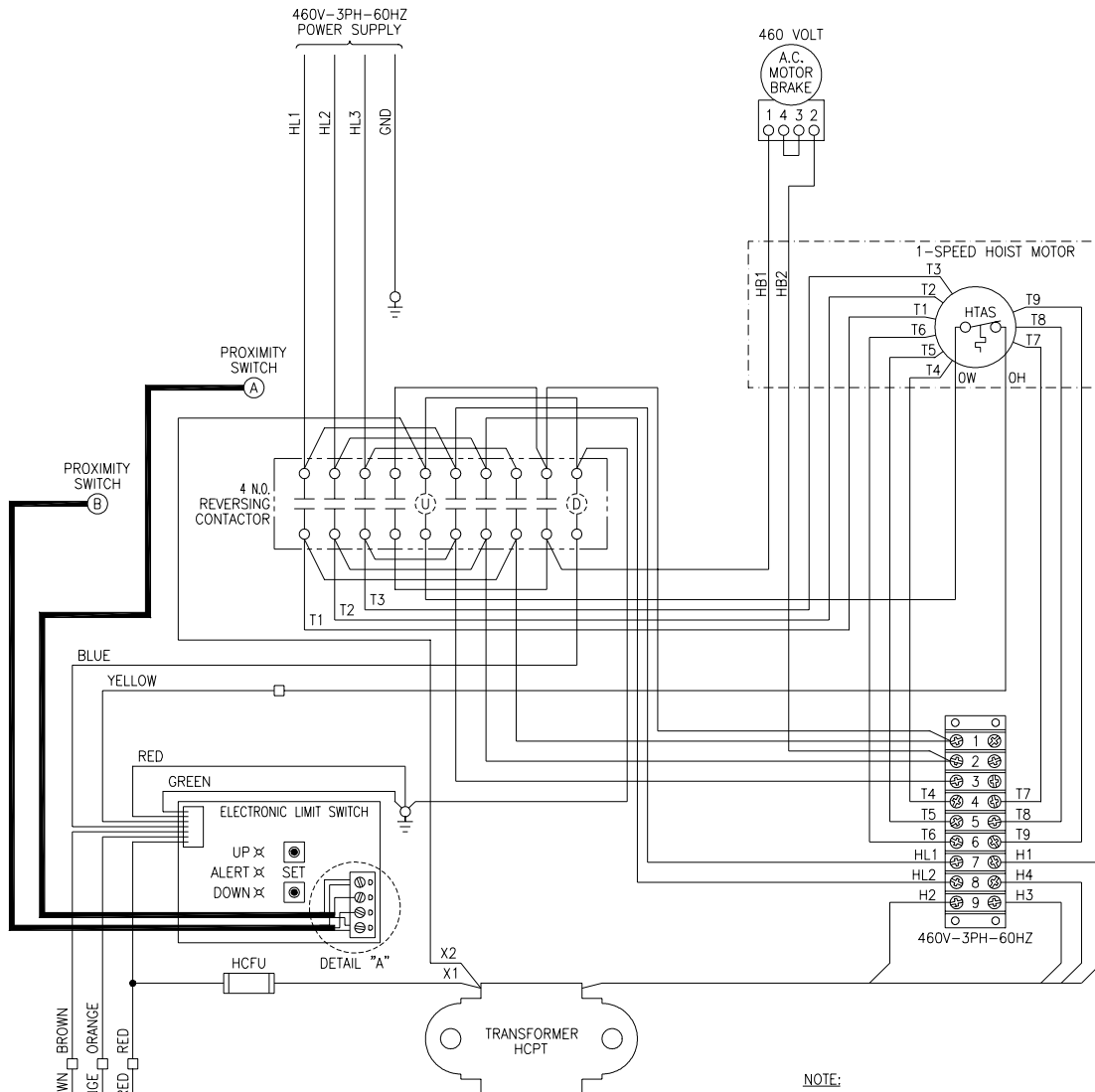
CET EQUIPEMENT DOIT ETRE MIS A'LA TERRE  
EN ACCORDANCE AVEC LES NORMES EN  
VIGUEUR.



## 230V CONNECTIONS, 3 PHASE

333213-01

# 3 PHASE, 230/460 VOLT RECONNECTABLE, SINGLE SPEED HOIST



**NOTE:**  
WHEN RECONNECTING THIS HOIST FOR 230 VOLT THE BRAKE, MOTOR & TRANSFORMER NEED TO BE REWIRED AS ILLUSTRATED ON DRAWING 333211 SHEET 1.

**DANGER:**

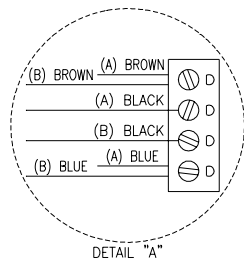
UNLESS HOOK RAISES WHEN "UP" BUTTON IS PRESSED SEVERE HOIST DAMAGE AND A DROPPED LOAD MAY RESULT.  
CORRECT IMPROPER HOOK DIRECTION BY INTERCHANGING INPUT POWER L1 AND L3 DO NOT CHANGE PUSHBUTTON WIRING.

**WARNING**

THIS EQUIPMENT MUST BE EFFECTIVELY GROUNDED ACCORDING TO APPLICABLE CODES.

**AVERTISSEMENT**

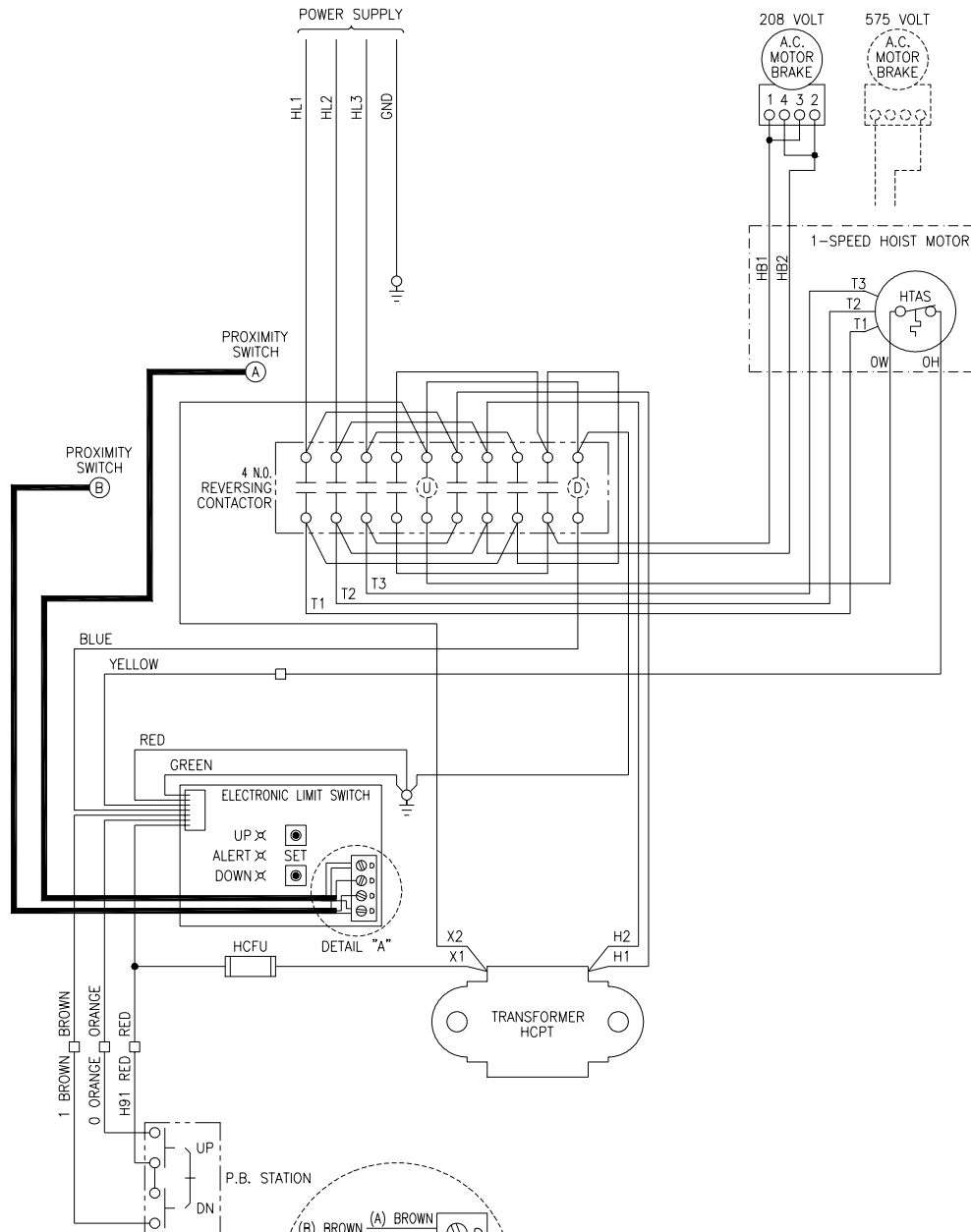
CET EQUIPEMENT DOIT ETRE MIS A'LA TERRE EN ACCORDANCE AVEC LES NORMES EN VIGUEUR.



## 460V CONNECTIONS

333213-02

# 3 PHASE, SINGLE VOLTAGE, SINGLE SPEED HOIST



**DANGER:**

UNLESS HOOK RAISES WHEN "UP" BUTTON IS PRESSED SEVERE HOIST DAMAGE AND A DROPPED LOAD MAY RESULT.

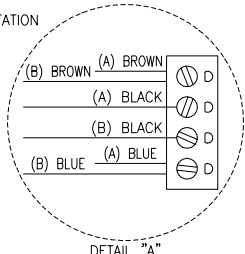
CORRECT IMPROPER HOOK DIRECTION BY INTERCHANGING INPUT POWER L1 AND L3 DO NOT CHANGE PUSHBUTTON WIRING.

**WARNING**

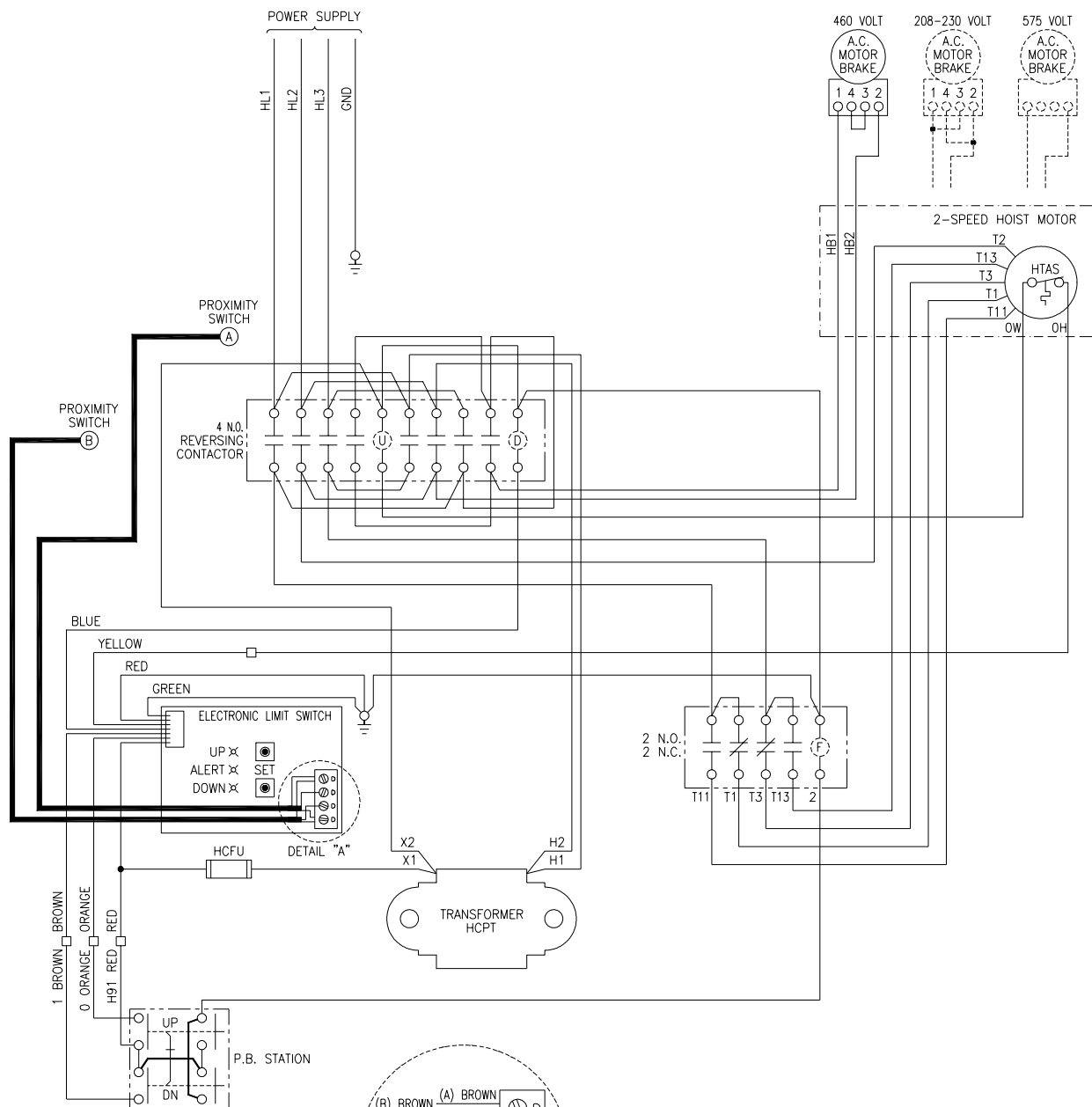
THIS EQUIPMENT MUST BE EFFECTIVELY GROUNDED ACCORDING TO APPLICABLE CODES.

**AVERTISSEMENT**

CET EQUIPEMENT DOIT ETRE MIS A'LA TERRE EN ACCORDANCE AVEC LES NORMES EN VIGUEUR.



# 3 PHASE, SINGLE VOLTAGE, TWO SPEED HOIST



**DANGER:**

UNLESS HOOK RAISES WHEN "UP" BUTTON IS PRESSED SEVERE HOIST DAMAGE AND A DROPPED LOAD MAY RESULT. CORRECT IMPROPER HOOK DIRECTION BY INTERCHANGING INPUT POWER L1 AND L3 DO NOT CHANGE PUSHBUTTON WIRING.

**WARNING**

THIS EQUIPMENT MUST BE EFFECTIVELY GROUNDED ACCORDING TO APPLICABLE CODES.

**AVERTISSEMENT**

CET EQUIPEMENT DOIT ETRE MIS A LA TERRE EN ACCORDANCE AVEC LES NORMES EN VIGUEUR.

